
Contents

Title	Author	Page
Articles		
Act to Ensure Your Travel Needs are Met in the Future	Jonathan Cook	38
Equine Charity and Christmas	Joss Goodchild	12
Friends of Reach Wood	Steve Boreham	12
Reconnecting the Lakes and Communities of the Danube Delta	David Thomas	17
Ruff	Catherine Gibson	13
Swaffham Prior Parochial Charities	Pam Waters	18
The Sunnica Scheme	Nick Acklam	3
Anglesey Abbey	Kayley Wilcockson	-
Bottisham Village College Adult Learning		16
Burwell Museum and Windmill	Alison Giles	13
Bus Timetable		39
Church		
Church Refurbishment Update	Pat Chalmers	22
Church Services and Events		23
Letter from the Vicarage	Eleanor Williams	21
Contact Information		40
Diary Dates		38
Dyke's End		14
Events Team	Debbie Quilter	7
Food Focus	Catherine Gibson	20
Getting to Know You	Joss Goodchild	8
Lucy Frazer MP		25
Neighbourhood Watch	Ken Evans	12
Out and About	Joss Goodchild	10
Parish Council		
Know your District Councillors		24
Know Your Parish Council		24
Meeting Minutes		27
Reach Fair 2022	Claire Halpin-McDonald	10
Rosanna's Ramblings	Rosanna Moseley Gore	5
Sport and Recreation		
Cricket Report	Ross Clark	26
Reach Riders	Sue Cameron	13
Tales from a Reach Garden	Danuta Gibson	19
Then and Now	Chris Patterson	40
Village Hall Committee	Sue Elliot	6
Village Update	Alex de Giorgio-Miller	3
Wicken Fen	Julia Hammond	15

From the Editor

The last two months seem to have flown by and if I'd been on time with the magazine and writing this a couple of days ago, I'd be able to reflect that all is moving steadily in the right direction. The arrival of Omicron (I could suggest many better names) is not welcome but we shall wait and see what it brings – and deal with it.



Positive stuff now. Christmas events are all sorted - please go to the **Events Team** contribution on page 7 and you'll get to know all you need to know about them. They're going to be fun.

The Events Team relies in the main on the Grant Fund to contribute to the cost of its activities but also fundraises by organising merchandise items and selling them. This Christmas we again have a Christmas card – big thanks to **Gareth Davies** for the photograph – and to all others who sent in pictures. Have a look at the **back page of this magazine** for more details.

It's a big issue this time, 40 pages with a lovely article from **David Thomas** on page 17. In addition, there are plenty of mentions of a review of our **Bus Service** taking place currently. The main one dedicated to this is on page 38 – well worth a look and an input to the survey.

The **Village Cafe** is a real success, their contribution is on page 9, including when they are open over Christmas.



You'll also see the customary lovely wildlife article from Joss Goodchild who has been contributing to the magazine for 11 years now. Sadly for us however, this will be her last one since she has taken on an important project for the National Trust and rightly wants to devote all her energies to this.

In addition, this issue will be her last "Getting to Know" contribution. I am sure you will all join me in wishing her well and of course, we do not want these article to cease – they are too important to the magazine. So please, if you are interested at all in taking over either of them, let me know and we can have a chat about it and I am sure Joss would be happy to answer any questions you might have too.

Finally – have a great Christmas everyone and I hope to see you at the forthcoming Christmas events.

David Parr

Cover Photo courtesy of Dan Mules

About the Magazine

The purpose of *Within Reach* is to serve the whole village by circulating information and interesting articles free to every household. Additional copies are available at a charge of £2.50. Issues are published bi-monthly covering the months of Feb/Mar, Apr/May, June/July, Aug/Sept, Oct/Nov and Dec/Jan.

Copies of *Within Reach* magazine and its predecessor *Out of Reach* can be found on the village website www.reach-village.co.uk. The next copy date is 20th November 2021. This magazine (which is fully funded from advertising) is printed by Burwell Print Centre, an excellent social enterprise which trains and supports adults with learning disabilities and provides high quality design and print capabilities.

The Team

Editor	David Parr
Distribution	Freda Lloyd, Claire Halpin-McDonald and Grahame Radford
Photographer	Rosanna Moseley Gore
24Acres	David Thomas
Anglesey Abbey	Kayley Wilcockson
Church	Eleanor Williams
Cookery	Catherine Gibson
Cricket	Ross Clark
Events Team	Debbie Quilter
Gardening	Danuta Gibson
Getting to Know You	Joss Goodchild
Neighbourhood Watch	Kevin Evans
Reach Riders Group	Sue Cameron
Rosanna's Ramblings	Rosanna Moseley Gore
Snakehall Farm	Liz Pitt
Then and Now	Chris Patterson
Village Matters	Alex de Giorgio-Miller
Wicken Fen	Julia Hammond
Wildlife	Joss Goodchild

Village Update

There's no mistaking that winter is on its way now. My morning dog walk is now in darkness and the number of layers required has increased exponentially!



But I do love this time of year and am grateful that when I take a break from work to walk in the woods in the afternoon the colours of the leaves are awesome and it is a real pleasure.

Some of you will have seen us out at the allotment – we are busy tending the cabbages and sprouts and putting the rest of the plot to bed. The kids have had several fabulous sessions atop the enormous pile of manure that is slowly being shifted to the beds – they aren't great at shovelling but they make up for it with enthusiasm!

Whilst things are much more open now, there are still lots of coronavirus cases in the community and inevitably some of us will need to isolate at some point. Most people have their support networks well set up by now, but if you do find yourself self-isolating for whatever reason, please do know that the **Reach Help Network** is still available to anyone who needs it. If you do need some shopping, a prescription picking up or something from the post office, or just a chat, then do get in touch and we will be happy to help.

Email a.degiorgiomiller@gmail.com or call me on 07771 348013. I have a lovely lot of volunteers who I send out calls for help to, so don't think that you are just bothering me! Please do pass on this information to anyone in Reach who you think it may help.

The Greater Cambridge Partnership is consulting on options to improve walking, cycling and public transport on Newmarket Road and they are keen to hear your views. The consultation includes proposals for new bus lanes, dedicated cycle lanes, roundabout improvements and moving and expanding the Newmarket Road Park and Ride. Further details are available online at www.greatercambridge.org.uk/NewmarketRd2021 where you can see the options they are looking at and fill out the online survey. Alternatively, you can contact them by phone (01223 699906) or email (consultations@greatercambridge.org.uk). The consultation closes on Wednesday 22 December 2021 at midday, so please submit your feedback by then.

[Ed: See page 36 of this magazine for further, more detailed information.]

Keep well and enjoy the Autumn leaves!

Alex de Giorgio-Miller

The Sunnica Scheme

On 2 November Catherine Judkins of the Say No To Sunnica Group and Nick Wright of the Alliance of local Parish Councils opposing the Sunnica solar and battery storage proposal outlined their case for opposing the scheme to Reach Parish Council.



Sunnica Limited proposes a solar panel and battery storage scheme which would occupy around 2,500 acres (about 1,000 hectares) of productive arable land in Suffolk and Cambridgeshire. The scheme is 'nationally significant infrastructure project' and as such, will be considered by the Planning Inspectorate rather than by the local planning authority. Sunnica submitted its application to the Inspectorate on 18 November.

If approved the scheme would be the largest such development in Europe and the largest battery storage scheme in the world. It has attracted strong opposition from the communities most obviously affected - villages such as Isleham, Snailwell and Red Lodge. MPs Lucy Frazer and Matt Hancock, the MPs whose constituencies would be affected, have stated their strong opposition to the proposal.

Catherine and Nick's principal grounds for opposing the scheme are:

- There has been an absence of meaningful consultation. Sunnica is ignoring requests to engage with affected communities.
- It can never be carbon neutral, so will do nothing to support Net Zero targets. The scheme is designed to trade in electricity (buying energy when it is relatively cheap and selling when prices are higher). The scheme is therefore as much about storage as it is about generation of electricity.
- The likely Lithium-ion storage technology, amounting to about 300 shipping containers of batteries, presents a significant fire risk. Fires that have occurred in similar installations elsewhere have been difficult and dangerous to put out. The firewater used becomes a serious environmental hazard. Highly toxic gases such as Hydrogen Fluoride are emitted while the fires burn and these gas plumes can affect areas over 4.5km away.
- At the end of the scheme's realistic service life of around 25 years the land involved could be deemed 'brownfield' and thus would be vulnerable to housing and industrial development.

Our own locality would be directly affected as the scheme proposes to connect to the National Grid at Weirs Drove in Burwell and would require significant growth of the substation. The transformers and associated equipment would be a sizeable and noisy presence in the local landscape, adding to the current expansion of the substation.

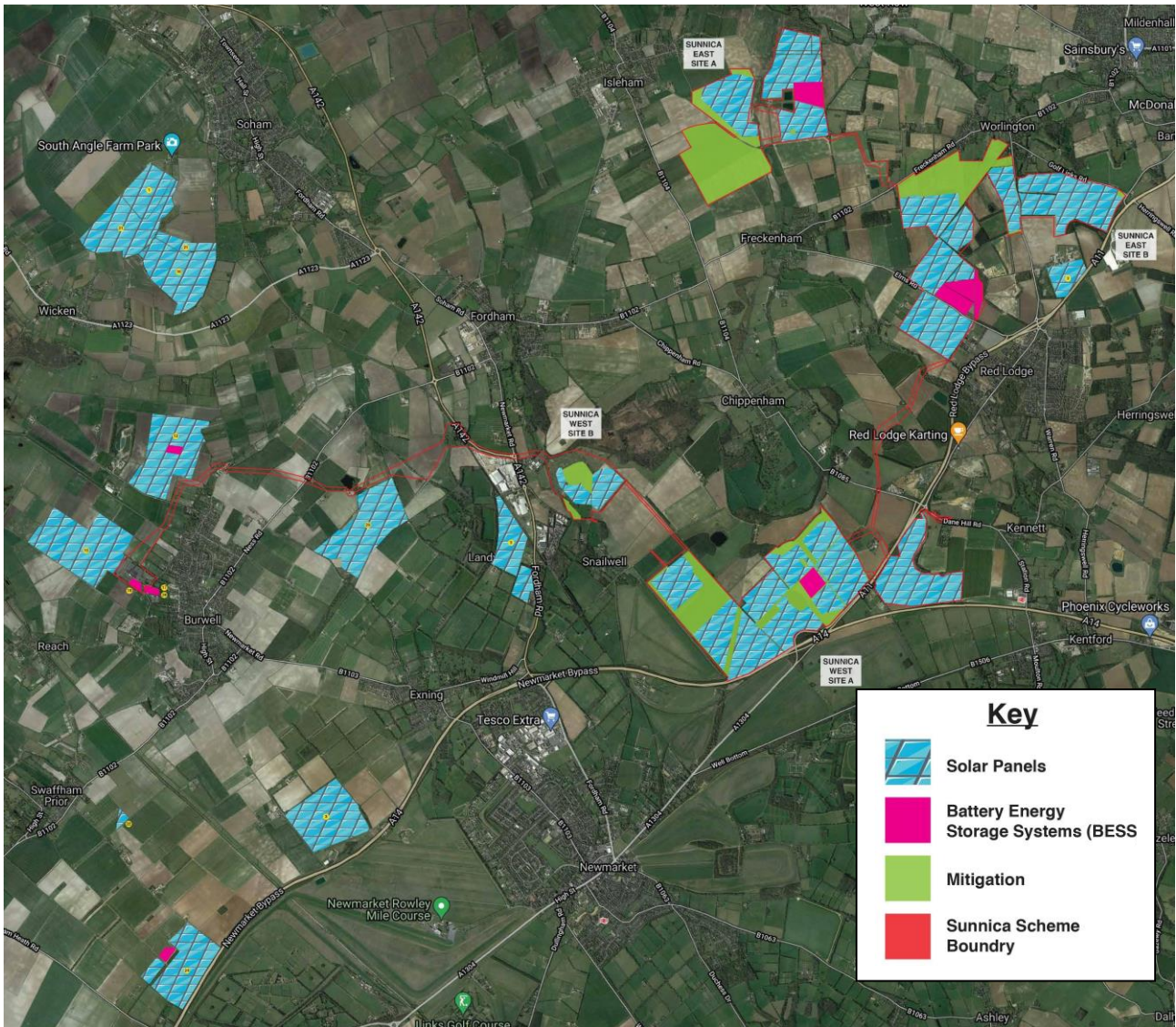
Reach PC supports the principle of green energy generation but has already raised concerns about the scale and quality of the Sunnica proposal. We now plan to register with the Planning Inspectorate as an interested party so that we can make further representations.

We are particularly focused on the cumulative impact of green energy developments on our neighbourhood. Sunnica's proposal would add to the 160 hectares of solar panels already approved on Burwell Fen and the expansion of Weirs Drove substation. The satellite image below summarises all approved and proposed solar energy and battery storage developments in our area.

To see the map in colour, please go to the **Reach Village website**, then from the left-hand menu select **Services** and then **Sunnica Project View**.

Reach PC would welcome the views of villagers to help shape what, if anything, we say to the Inspectorate.

Nick Acklam
n.acklam@reachparishcouncil.org



Rosanna's Ramblings

Until a couple of weeks ago, my ramblings were going to be about the joys of 'forest bathing' – as opposed to the rigours of 'wild swimming' that seems to be growing rapidly in popularity (not with me, nor my spouse however!). And I am indeed going to write about forest bathing, but also bring tidings that seem to be making not just Charles and me glad, but a large number of Reach neighbours too. But for that you'll have to wait (unless you've flicked through the magazine looking at the photos too, of course, in which case it's too late for a spoiler alert).



So, forest bathing is something that we started doing in the first anxious but cheerfully relaxed lockdown last spring. We've started doing it a lot more again this past autumn and if you haven't given it a go, I thoroughly recommend it. It started in Japan, where it is known as *shinrin-yoku*, meaning bathing in the atmosphere of the forest, or taking in the forest through one's senses. I'm sure there are many ways of practising it involving major expeditions into uncharted virgin forests, or attaching to it specific spiritual or meditative practices, but my version is much simpler. And also very easily accomplished ...



Because, dear reader, we have in our midst – or more accurately on our edge – Reach Wood which, even in the scant six years I have known it, has grown up beyond childhood and teenage years into young adulthood. It's grown up enough to have known loss and death (the skeletally dead ashes, for instance, creating through their non-shade wonderful opportunities for other ground covering plants and other young trees to start to colonise).

It's grown up enough to play host to a spectacular array of fungi this autumn. It's grown up enough to provide secret places aplenty, if one just steps off the path and takes a few steps into the Woods (mythical home of fairy tale dangers).

So if you haven't already been doing this regularly, I encourage you to try this. Take a walk into the wood, follow the paths (the ones for which it took me about a year of regular walking to create a reliable mental map), and at a point that feels appealing to you, step off the path and walk into the trees. Walk far enough so that a passing fellow walker wouldn't notice you and choose a tree to lean your back against. Close your eyes for a few minutes, let your breathing settle, and listen. You will hear distant traffic, perhaps the noise of a tractor, the grain store motor running; then a dog bark or a cockerel crow; then the birds flying overhead or rummaging in the undergrowth.

Then the murmur of insects. Then a twig snapping. Then as your ears adjust to ever quieter, ever closer sounds, you may hear a tiny rustling or scuttling sound from a branch near you. You may hear the breeze making the low beech branches curtsey gracefully and lift up again. You may hear the wind pick up and the jackdaws noisily take to the air. You may hear a light aeroplane moving high overhead. You will hear your breathing and perhaps the pulse in your ear.



Before you open your eyes to the dominance of your visual sense, take a deep breath and smell what you smell. Very mushroomy for me this morning and a week or two ago we walked past ... something ... unknown ... in the wood that absolutely smelled of mixed spice and therefore of Christmas. There is life, or decay, or warmth, or chill in the aroma of the air, depending on season and time of day. Immediately after rain there's that intoxicating smell, beautifully called petrichor (from the Greek words for rock and the fluid flowing in the veins of the gods), which much more prosaically actually comes as a by-product of the frenzied activity of billions of microorganisms jumping into action when dry ground gets a wetting. Sometimes there's the unmistakable scent of something dead in the undergrowth. Sometimes you hardly detect anything at all.

Then, only then, open your eyes and gently start to look around you. Have you come across the terms 'hard eyes' and 'soft eyes'? Hard eyes are analytical, focused, sometimes critical and judgmental, sometimes just super-interested in something very attention-grabbing. Soft eyes take in more of the big picture, the mood music, the feel of what's in front of them. Use both hard and soft ways of looking and you will be rewarded with both the stage-set in broad brushstrokes and the intriguing details. Like the way the horizontally slubbed bark of the cherry trees has an astonishing streaky sheen when caught in the sunlight. How a leaf may be caught hanging on an invisible thread of spider silk. How an insect-nibbled hole in a leaf allows you to see through it to the leaf mould on the ground. I could go on

Then there's touch – the texture of the different varieties of bark, being my favourite. But in springtime the heart-rending tenderness of tiny furry leaflets as they just break out of their buds. And in autumn, the self-same leaves turned crisp and crunchy and brittle. And the touch, experienced through sole of boot, of the variations in yield of the ground – is the clunch mud slithery or sticky today and the leaves rustling like paper, or damply slimy? Has an outstretched twig caught at my hair? Or have I walked into a big web (shudder)?

I suspect it would be irresponsible of me to advocate too much tasting, there being too many things that might at worst do major harm (toadstools), or at best be just disgusting (sloes). But tuning in to the other senses is more than enough to take my frazzled mind down a whole load of notches into an extraordinary sense of peace, and calm, and contentment. And that only takes a few minutes. Charles and I part company somewhere on the path, and find each other again shortly afterwards ... changed, for the better.

And all this gentle, contemplative activity may well take an extended back seat from 20 December when Milo Moseley comes home to us and a new adventure begins.



Rosanna Moseley Gore

Village Hall Committee



The Village Hall Committee has been working very hard in recent weeks to improve the ease of access to a newly designed website and comparing booking charges of other village halls. All this work is needed to ensure that we can promote Reach VH to maximise the use of the facilities and improve income which is vital to its survival.

Since the Village Hall no longer runs the Fair we haven't got that income which has left a big hole in our finances and although we were grateful to receive generous grants from ECDC during the COVID closures which saved us from disaster, we have continuing major expenditure on heating oil, electricity, cleaning and maintenance. So the bookings we receive are absolutely vital and we want to see the Hall used to its maximum capacity.

We are still working on the easiest and most accessible new web sites so that potential hirers can see improved photographs of the Hall and easily check on date availability. The booking charges will be comparable to other halls in the area and it's worth reminding everyone that Reach residents enjoy a discount on their bookings. All the details of the new web site and booking systems will be made available as soon as possible.

In the meantime, we are delighted we have the regular bookings, dementia choir, ballet, yoga and slimming world using the Hall and are particularly pleased to have the Village Cafe every Friday afternoon from 2pm which has brought in new users - and in January we shall welcome Church services while Reach Church has major work carried out over the year.

Please get in touch if you have ideas and would like to help us with keeping our Hall open and available we are so lucky to have it!

Sue Elliott Honorary Secretary 742268

Events Team

Advent Windows

Our Advent Calendar is complete! See below for all the dates and locations you need to enjoy our village advent calendar. Photographers please do send us your photos or pop them on our facebook page.

Christmas lights switch on 5pm Sunday 5th December

Join the count down as we switch on the Christmas tree lights. Come and hear the brass band and enjoy some gingerbread, mince pies and mulled wine. Wrap up warm I have heard there may be snow this night!

Seniors Christmas Lunch 12.30pm Wednesday 15th December

We are all looking forward to the return of this much-loved event. Everything is in place and those who have registered will be receiving further details shortly.

Carols Around the tree 6pm Friday 24th December

Join us as we share in the festive spirit and sing carols round the tree. Pleasingly, Lucy who took the lead during our last Carol Singing has agreed to do so again!

Father Christmas!

We are delighted to announce that as long as you children remain good, **Santa will be visiting again** on Christmas Eve!

Our **Reach Village Christmas Card** is in the process of being printed and will be available when we switch on our Christmas Tree lights. Big thanks go to **Gareth Davies** whose photograph was chosen (thanks go to everyone who submitted other lovely pics) – have a look on the back page of this magazine for further details.

The lovely **Christingle** service will take place on Thursday 23rd December, starting at 6pm in the Village Hall (due to building work at the Church). Join us as the Christmas story is told with readings by village children, please let me know if your child would like to be involved.

Looking forward to seeing you all again soon!
Merry Christmas!

Debbie Quilter
reacheventsteam@btinternet.com



Getting to Know Andrew Trump

Q. What is your full name and where were you born?

A. Andrew Jonathan Paul Trump born Seaford, East Sussex. I was born at home and whilst I was born my father watched racing from Doncaster with my sister Nicola downstairs.



The picture is circa 1974, I'm on the left in the killer shorts with my sister Nicola (centre) and cousin, Julie

Q. How did you come to live in Reach?

A. Jo, my wife, took a job as Deputy Principal at Hills Road Sixth Form College in 2009 and so we moved east from our previous home in Kington St Michael, Chippenham, Wiltshire. Our youngest, Alice, who was 5 when we moved, found it difficult to understand there was another Chippenham locally and yet it took us 3 hours to drive up here.

Jo arrived home from her interview and I was idly looking at houses in and around Cambridge to see what was available. Neither of us knew the area, all we knew was we wanted somewhere with a bit of land as Imogen, our eldest, was already pony mad. Whilst Jo was talking to Hills Road on the phone and accepting the job I found New Gant Farm; our house, on the web. It was exactly the sort of place we were looking for but we didn't expect to end up living here!

When we came to view the house we had lunch at the Dyke's End and Jo could tell I was enjoying it as she told me "It's the house, not the pub we're buying!"

Q. What school did you go to? And did you enjoy it?

A. I attended Abingdon School, Oxfordshire. Did I enjoy school? I still have several good friends from my time at school that I see regularly and I value the friendships I made at school. However I was not a particularly conscientious student and it was more of a chore than a pleasure but of course there were plenty of fun times. I enjoyed team sports and those friendships were forged on the playing fields rather than in the classrooms.

However, it was a brutal and anachronistic system and having seen how Jo and her teaching colleagues work and support their pupils, the schooling I had was very poor in comparison to what is provided today.

Q. When did you marry and how did you meet? Do you have children?



A. Jo and I married in 1998 in Hertford College Chapel, Oxford. We met in Swaziland in 1994 where I was managing a dairy farm. On a weekend off I had been panning for gold at Forbes Creek and having found a few carats I was celebrating at bars in Ezelwini. Towards the end of the long night I ended up playing cards in a rough shebeen and having won 6 head of cattle from a local headman, Jo was offered as a stake against the cattle such was his desire to win them back. I didn't take the bet but offered the gold I'd found to liberate Jo from her previous life. [Some of the details may have been misremembered].

We have two lovely daughters, Imogen and Alice. Immy is currently studying at Writtle Uni. to qualify as a Veterinary Physiotherapist and Alice is in her final year of A-Levels.

Q. Where do you work and what do you do there?

A. Before moving I was farming a small grassland farm where we had a suckler herd of Aberdeen Angus cattle and we finished all the calves at grass in a very traditional system. I had converted the farm to organic production and worked off the farm for Organic Research Centre, an organic research and extension organisation. It was very busy as we had over 100 head of cattle, two full-time jobs and two small children. My mornings started at 5am to see to the cattle before work and then a full day's work before returning to the farm in the evening.

I now run a specialist organic grain marketing company. We work with about 100 farmers dotted across the country and find markets for their organic grains. We sell grain to some of the brands you may have heard of. We supply wheat to: Marriages; Doves & Shipton Mill for their flour and supply oats that are milled to go in Jordans, Alara and White's Oats products as well as supplying feed mills. We only work with UK farmers and don't import grain and we don't work with any conventional grains.

We also supply grains to Jon Cooke at Fosters Mill in Swaffham Prior. I don't know of anywhere else in the country where there is such density of working traditional mills as, from the home office, we are only a few miles from Fosters Mill, Lode Mill, Burwell Mill and Wicken Mill.

Q. What pets do you or your family have?

A. We've generally been surrounded by a small menagerie with dogs, a stable cat, chickens, sheep and of course horses. Currently we are down to two horses, three dogs and a cat and have no chickens or sheep so fewer animals around.

Both Imogen and Alice have been keen riders since they were little and when we moved up from Wiltshire, we wanted to buy somewhere we could keep a pony. Imogen was so excited when we viewed New Gant Farm because of the stables and found fault with any other prospective houses.

Horses have somewhat defined our life in Cambridgeshire with both girls riding a lot and being involved in Pony Club and various competitions in and around East Anglia.

Q. What is your hobby?

A. Much of my spare time is taken up looking after our property which I grumble about but enjoy. Pottering about topping and harrowing paddocks and making some hay or mending fences allows me to pretend I'm still farming, which is what I'd do if I won the lottery. I grow vegetables with mixed results.

I enjoy walking our dogs and being out on the fen or further afield as I like to try to understand the landscape: how it is as it is and how it has changed over time and looking for the indications of this.

Q. What do you enjoy about living in Reach?

A. I don't actually live in Reach as the parish boundary is about halfway between our house and Swan Lake Grainstore. The village life in Reach is great. There is a lovely community here and the whole family were made to feel welcome when we moved in. That said, I love the peace and solitude of living where we do with no neighbours.

Q. What is your philosophy in life?

A. I once worked at Great Dixter with Christopher Lloyd, the garden writer, who, when asked about the state of his garden, once said "Weeds! I never notice them as I'm interested in the flowers" which I take to mean we should focus on the positive which I try to do.

I am a fan of civility. We all have to rub along together but too often people seem rather fractious and quick to anger. We don't have to all agree but neither do we have to vehemently disagree and I think showing respect to others allows us all to show our better selves.

Andrew Trump

New Gant Farm, Swaffham Prior Fen, Cambridge, CB25 0LQ

Andrew Trump – interviewed by Joss Goodchild

Village Cafe

Fridays 2pm – 4pm, Reach Village Hall

The Village Cafe has been well attended and will continue weekly on Fridays. It's been a delight to see the enjoyment it brings. There is a rota if you wish to volunteer to make a cake or help set up and there is a donation box - pennies only to contribute to ingredients

On Friday 17 December the Cafe will serve sherry and mince pies

There will be no Cafes on Friday 24 and 31 December 2021, the Cafe will resume on Friday 7 January 2022. Hurrah!

Everyone is welcome to all the cafés so bring your family and friends.

Reach Fair 2022



Good progress continues to be made with organising the external logistics associated with the Fair, like a car park licence, entertainers, first aid cover etc. All the relevant individuals have been contacted and reminders if required are being made. We have also achieved good progress with booking the inflatable games, food outlets, and craft and produce stalls.

We are actively making postings and Reach Fair Facebook page has several hundred followers. Similarly, the Reach Fair website is regularly updated to reflect the 2022 Fair.

In the new year we will visit houses in the village on the weekends of Sat 8/Sun 9 and Sat 15/Sun 16 January in the afternoon. We would like to introduce ourselves; know what you think about Reach Fair; provide some information if you're new to the village and unfamiliar with the Fair; and encourage villagers not already involved with the Fair to contribute maybe by just giving an hour or so of your time.

Nothing too onerous or scary.

**Alex de Giorgio-Miller,
Cris Fletcher and Claire Halpin**

Out and About Late Autumn 2021

It seems strange, following continuous days of sunshine, cobalt-blue skies and the warmth of October, to also be wishing villagers a Very Happy Christmas and New Year in this same article.



The sharper mornings of November, early dusks and darker evenings announce the arrival of winter, the first frost in Reach noted on 2nd November. Every morning the shrill and insistent warning cries of blackbirds in Great Lane give our alarm clock a run for its money. Birds sing mostly at dawn as the cold moist air of morning carries their songs and meanings much further.

Half a dozen quarrelsome Jackdaws raid our bird feeders daily and squabble on the neighbouring roofs in Great Lane. I'd like to discourage them from the garden for they are notorious egg thieves, thereby posing a risk to songbirds. On the subject of nuisance garden pests, brown rats skulk in the shrubbery, encouraged by a ready supply of food from the bird feeders and the cover afforded by overgrown vegetation. I was astonished, when throwing a handful of mealworms to expectant blackbirds, to see an adult rat emerge from beneath a plant, lunge forward and connect first with one surprised blackbird and then the other. This was the final straw, anti-rat action has now been taken, not an easy task with other wildlife to safeguard in the garden, most particularly precious hedgehogs.



Jackdaw

On 5th November a dog fox crossed the field as we walked at dusk near Blackberry Drove. An unusual sighting, the vixen and cubs that once played on the sloping lawn of Jaquie Lewis's house in Great Lane are now a distant memory.

There were notably fewer wasps this summer, minute strips of wood were licked from the stable doors but the resulting golfball-sized papery nest located in our feedshed was abandoned by October. I read that trees can detect insects chewing their trunk or leaves which triggers them to boost production of insecticidal chemicals.

We are trying not to disturb the hibernating butterflies (small tortoiseshell) found on bales of barley straw. If awoken early they use energy they don't possess to find an alternative sheltered place, with sad consequences. Undisturbed, most butterflies emerge from hibernation during the first warm days of spring.

Butterfly conservation advice: 'If a butterfly wakes in winter, place it in a dry, transparent container lined with a folded section of kitchen roll to absorb moisture and placed in the salad drawer of the fridge, where the temperature is around four Celsius. The butterfly will soon settle and can be kept there until warm, sunny weather arrives in March or April. Alternatively, remove the butterfly from the container when it is quiet and place in an unheated shed or room to complete its winter rest'.



Small tortoiseshell, the top one resting and as a hibernating butterfly will look

Although silent on the wing, the sharp calls of tawny owls can be heard near Reach Wood during the evenings. The hoots of owls increase as territories are defended, the screechy 'tu whit' cry is the female tawny owl, the 'hoo hooooo' the male reply.

Following 10 years writing this small record on local wildlife sightings I have decided to 'retire', mainly because I no longer walk the distances required to really see what's about but also because I've taken on a sizeable 2022 research project for the NT's Wicken Fen.

Grateful thanks are due to all villagers for their invaluable contributions to the list of sightings over many years. Would somebody please consider taking Out & About on so that the log can continue. Please contact David Parr.

Ron Greenhill mentioned that his son was walking on Burwell Fen as dusk fell one evening in November and was thrilled to see large flocks of 70 or so snipe flying overhead.

17.11.21 Dafila & Tim:

'I went down to the bottom of the garden this morning and could hear whooper swans calling and arguing! Tim and I drove out onto the fen just now and found a flock of over 90 Whoopers feeding on winter wheat not far from Reach lode bridge, (on the west side to the north west of the bridge.) There were also three roe deer (male, female and young male). It was so lovely to see them. There was also a probable green sandpiper and a little egret in a drain nearby. A few days ago, when Tim walked round the wetland, he watched 40 Whoopers come in to roost on the second pool on Burwell fen.

PS we just saw a great murmuration of starlings going down to the reedbed on Tubney Fen near the hide! Must have been at least a couple of thousand birds (not that I tried to count or estimate). It was lovely because the moon was just rising behind them in the east.

Nick Acklam's observation: 'on the early morning of 17 November there were 40 or so Whooper Swans on a newly ploughed fensoil field just beyond Reach cycle bridge. It was quite a sight - white plumage against the black earth and quite a sound too - Whoopers are very voluble birds'.

Joss Goodchild



Santa is coming to see us again on Christmas Eve!

Equine Charity and Christmas

Christmas cards will be arriving soon. Please would you consider tearing off any stamps and putting them in the collecting bin inside our open garage at **6 Great Lane**.

They accept UK stamps, foreign stamps and rare stamps and it's a really easy way to recycle and help Redwings at the same time.



I will parcel them up and post on to Redwings. This simple action benefits the equines cared for by this charity. Hand sanitiser by the bin if required. Thank you!

Joss Goodchild

Neighbourhood Watch



Last month we were told that "Cambridgeshire Constabulary have been awarded £471K which will be predominantly used to tackle violence against women and girls". Perhaps this is the time to make use of a new reporting tool that is predominantly aimed at women and girls. It is where you can report streets where you consider it is unsafe for any of a number of reasons.

The tool is called StreetSafe and can be accessed here, [StreetSafe | Police.uk \(www.police.uk\)](https://www.police.uk). This is not an alternative way of reporting crime, that should be done in the usual way. If you want to know more about the reporting tool, click on the link and have a look, but if you are only checking the content do not press submit.

For your information, I have attached a list of how many coordinators we have in each Parish. Unfortunately we have lost a number of coordinators in the last 18 months, mainly due to house moves, but we have done very little recruiting because we tend to use village fetes for that purpose and most have been cancelled due to the pandemic. If you are a position to promote neighbourhood watch, please do. You can also pass on my contact details.

Best wishes

Kevin Evans

01353 614892
kevin.g.evans@ntlworld.com

Friends of Reach Wood

On Sunday 3rd October, six volunteers (Nick, Charles, Sue and David are in the pic), from the Friends of Reach Wood (FoRW), sowed wildflower seeds provided by the Woodland Trust on a small (0.15 ha) test area of Reach Wood Meadow to increase biodiversity at the site.



Following a consultation process it was decided that this was the best way to increase the species richness of the chalk grassland. A summer plant survey of the test area revealed more than 30 species already living there. However, several key chalkland plants were missing. In preparation for the sowing, the test area was mowed and harrowed in September. It took the volunteers two hours to rake and sow the area. The chalk soils wildflower mix comprised 24 species including Greater Knapweed, Viper's Bugloss and Kidney Vetch. A plant survey will be carried out next summer to monitor the increase in biodiversity.

If this experimental initiative succeeds, FoRW could potentially do something similar in other areas of the meadow and wood in following years.

Steve Boreham

Burwell Museum



Burwell Museum is an amazing place, as many of our firsttime visitors say. It was started by a few visionary people about thirty years ago. They were people who had seen tremendous changes in their lifetime and wanted to record them before they were lost to human memory for ever. What they have achieved is truly amazing. They did it voluntarily, with help from family and friends and over the years, their enthusiasm attracted others. The Museum today is a credit to their hard work. Today the Museum is in need of further help.

We need Trustees: people who have some experience or expertise in fundraising, marketing, finance, events management, interest in museums or heritage, or previous work with charities. (Trustees are volunteers, and no longer held financially responsible.)

We need volunteers: People who can give a few hours a week or a month, to staff the kiosk or the tearoom, or who can put their hand to practical work, repairing exhibits, or general handiwork. We are particularly looking for new members for our Mill maintenance team.

The Museum is open to the public on Thursdays, Sundays and Bank Holidays from Easter to October and for maintenance work on Tuesdays.

We need a part time general administrator: This is a paid post, Sundays and Thursdays, during the season, and because of this would suit a local person. More details of the post will be available early in the New Year. If you are interested in joining our dedicated group at the Museum, please visit www.burwellmuseum.org.uk for further information or get in touch at: education@burwellmuseum.org.uk.

Alison Giles

www.burwellmuseum.org.uk
01638 605544
museum@burwellmuseum.org.uk
Burwell Museum, Mill Close, Burwell CB25 0HL

Reach Riders



Membership renewals are now due and all existing members are reminded to complete the new forms this year. We have made a small increase in membership fees - they are now £25 for the whole year, excellent value for money.

We'd like to thank Craig Reader for the continued maintenance of the arena which is in excellent condition and allow us to use it throughout the winter. And thank you to all the committee members for their continued hard work in fund raising and maintenance of the jumps and fencing. The committee members undertake regular checks in the arena to ensure it is always safe for use but as always, if users spot anything amiss please do report it to us.

Lucy Tuck continues to give lessons on a Saturday, so if anyone would like to be added to the WhatsApp group please let us know. We will continue to plan for social events and fundraisers, so if there is anything particular you have enjoyed and would like to see happen again, just let us know!

Sue Cameron

Sadly - Farewell to Ruff



Hannah and Eleanor pull along a patient Ruff when she was on her last legs in March. She died shortly after.

Catherine Gibson

The Dyke's End

Our **Christmas Menu** below is available now (see below).

For further information on the Pub, including our Christmas Day menu and opening hours – please go to:

<https://www.dykesendreach.co.uk/>

*From
The Dyke's End:*

XMAS MENU

STARTERS

Soup of the day, crusty bread & herb butter (v)
Potatoes in an egg batter (v)
Smoked salmon, dill & crème fresh roule & toast
Chicken liver parfait, onion chutney & toast

MAIN COURSE

Clams, hake & prawn bouillabaisse
Slow braised lamb shoulder
Turkey escalope
Mixed nut Wellington (v)(n)
(Served with all the Xmas trimmings)

DESSERTS

Christmas pudding & brandy sauce
Crème brûlée & shortbread
Ice cream selection

2 courses £24.95
3 courses £27.95

Wicken Fen



Morning light at Wicken Fen by Glynis Pierson

Winter Wildlife and walks

There's plenty of wildlife to look out for on your winter walks as overwintering birds return to the Fen. From whooper swans and wigeon enjoying the open water, to hen and marsh harriers finding places to roost amongst the reeds, the diverse habitats on the reserve attract a variety of winter visitors.

If you have your own visitors over the festive period, there are plenty of routes to take to get some fresh air and stretch your legs, whether you want to pop in for an hour or make your visit more of a family get together. Our friendly Visitor Centre team will be happy to suggest a suitable walk. Don't forget to pop into the Docky Hut Café for a warming hot drink and a festive treat afterwards.

Wildlife photography

Do you love capturing images of fen wildlife while you are walking on the reserve? If so we'd love to hear from you as we're looking for local photographers who would be willing to share their photographs for our website and social media channels. Please contact Isabel by email: isabel.sedgwick@nationaltrust.org.uk

Percy the Park Keeper's winter wander trail

Join us for a world of adventures and fun this winter. Percy and his animal friends will be giving nature a helping hand. Follow the trail round our Boardwalk and Woodland Walk to see how you can help too! There's no need to book to enjoy this activity which will run from Saturday 4 December to Monday 3 January between 10am and 3pm. The trail costs £2 and admission charges apply for non-members.

Festive season opening

The Visitor Centre, Docky Hut Café and Sedge Fen will be open every day except Christmas Day. Routes into the wider reserve (Burwell, Baker's, Adventurers' Fens and beyond) are all open every day as usual. For further details of opening times and facilities, please check our website.

Footprints' Community Engagement Project: walk leaders

With school outreach visits, archaeology and tree planting activities all underway, we're now planning for next year and starting to recruit volunteers for the next phase of our National Lottery Heritage Fund project: Footprints. We're looking for walk leaders to join the team and lead walks in the communities on the edge of the Vision area. With the support of our local partner Healthy You (East Cambridgeshire District Council), full training and support will be given. To find out more and apply, go to www.nationaltrust.org.uk/volunteer click on 'Find an opportunity now' and search for Wicken Fen.

For the latest information please visit our website and keep an eye on our social media feeds www.nationaltrust.org.uk/wicken-fen

Julia Hammond

Senior Programming and Partnerships Officer
Wicken Fen Nature Reserve

Lode Lane, Wicken, Cambridgeshire CB7 5XP
julia.hammond@nationaltrust.org.uk
07929 722927





Bottisham Village College

Adult Learning

Thank you for your patience and support over the last few months where Covid-19 restrictions have made it difficult for us to provide some courses.

We are now looking forward to seeing you again - we are offering:

Astronomy
Calligraphy
Cinematography
Dressmaking
French Beginners
Spanish Beginners
Indian Cookery
Italian Cookery
Introduction to Counselling
Painting – Mixed Media / Watercolour
Patchwork and Quilting
Pottery and Ceramics
Stained Glass
Tai Chi for Relaxation
RHS Horticulture
Maths GCSE in One Year
Yoga

For full details please visit our website:

www.bottishamvc.org/adultlearning

Tel: 01223 811372 **Email:** adultlearning@bottishamvc.org

Facebook: BottishamAdultCommunityLearning or **Twitter:** @CommunityEdBott

Reconnecting the Lakes and Communities of the Danube Delta

Here in Reach we have watched the National Trust begin the process of restoring the fenland ecosystems. Management is bringing back some of the area's lost biodiversity, including species like otter, bittern and common crane. With COP26 still fresh in our minds and the prospect of catastrophic climate change (for many) a current reality, it is also worth remembering that restoring the fens is making a significant contribution to climate change mitigation, by reducing the release of carbon dioxide into the atmosphere caused by the oxidisation of dry peat.

Unsurprisingly, management of the water is key to the long-term success of the Wicken Vision, so I was particularly interested to visit the Ukraine part of the Danube Delta earlier this year. The Danube Delta is the largest surviving wetland in Europe, but widespread development of infrastructure during the twentieth century has led to a deterioration in local water quality and biodiversity loss. Attempts to "tame" natural river dynamics have negatively impacted local people, particularly fishing communities and much of the infrastructure that has caused these impacts is now dilapidated and obsolete. The programme that I manage is funding work that is trying to restore parts of the delta – so here is an account of the first day of my visit and some reflections on the impact of modifying the natural flow of rivers and wetlands on nature and people.

Looking at the plates of food spread before us, as we sat for lunch in the shade of a large Aspen tree with serving bowls piled high with boiled fish, it would have been easy to believe that the adjacent Kartal lake, one of many in the Danube Delta, supported a healthy fishery. But our hosts, members of the community of Reni, explained that this wasn't the case: "In the past a good fish soup would contain at least seven different fish species caught from the lake. Here we only have two – carp and catfish. The lake isn't what it was".



Having eaten my lunch and leaving those remaining at the table to resolve a disagreement about whether it was customary to drink the bouillon first or eat the fish, I wandered down to the water's edge.

Mykhailo Nesterenko (Misha), Team Leader of Rewilding Ukraine, came up beside me and pointed to a spikey plant floating across much of the lake's surface (see picture below). "There's another sign of the disruption to the natural ecosystem" he explained. "It's called Water soldier [Stratiotes aloides]. It's a native species, but with the stagnation of water flow caused by sluices and weirs it has spread. They don't like it locally because it hinders navigation and reduces the area of open water available for fishing".



All these changes have their roots in water management schemes that began during Ukraine's Soviet-era past, as attempts were made to use the Danube Delta's lakes for cultivation of rice or as reservoirs. Connections between many freshwater lakes were broken or were managed through sluices. But the schemes were nearly all ultimately failures.

Later that day we stood at one of these sluices where moments before Squacco herons had been roosting in the shade. Oleg Dyakov, Rewilding Officer, explained the typical pattern of events and their consequences as we studied a map of the delta and its waterbodies: "Under natural conditions lakes were connected to the river – fish could pass freely for spawning and water levels would rise and fall with the seasons. Sometimes lakes would have dried out completely. The sluices prevent the passage of fish between the river and the lakes. Because the economies of most of the communities around here are traditionally more dependent on fishing than agriculture that has a serious impact on local livelihoods".



And as Oleg explained, it isn't just the fishery that is affected. The natural dynamics of the river created an ecosystem with fluctuating water levels that helped to maintain a mosaic of habitats.

More stable water levels have led to the spread of dense reed beds, inaccessible to fish and unsuitable as breeding or feeding areas for waterfowl. Without the seasonal flushing and drying out sediments are increasing and lakes are becoming shallower, murkier and more mineral rich. Nature has taken a hit.

Rewilding Ukraine are working with local partners to restore connectivity between lakes and the River Danube and establish a more natural, dynamic water regime that will benefit nature and people. The communities that we met were enthusiastic about the opportunities this will offer. At the village of Novoselske, under the leadership of the council leader Igor Plehov, plans are being made to re-develop the site of a former and now largely derelict camp site as an eco-resort. As we discussed their plans standing on a jetty among the reeds it seemed perfectly situated, on the banks of Lake Kartal with access for boating, angling and walking.



Further downstream we visited Kartal lake meadows, where dredging the channel had restored water flows and annual flooding some years previously. Misha pointed to extensive pastures where sheep, domestic geese and the occasional cow were grazing whilst a marsh harrier patrolled above the reedbed: "This area was bone dry – it never flooded and was bare of vegetation, pretty useless for cultivation or grazing. Since the water flow was restored, it floods each year, and you can see how it is now being used by the community. It is one of the few remaining areas of common land so it is really important to people living here with livestock".



Water, that most fundamental and essential of natural resources, has been managed for millennia. Ever since Sumerians settled in the area bordering the Tigris and Euphrates rivers in about 4000 BC and started to irrigate the 'Fertile Crescent', rivers, lakes and wetlands have been made less natural as water is redistributed in space and time for agricultural and domestic use. Civilisations have been built on the management of rivers and water, but as the Danube Delta demonstrates, such manipulation can have unpredictable long-term consequences and benefits can be temporary and illusive.

What was striking about the restoration interventions that I saw being planned or implemented by Rewilding Ukraine was the level of local support. Everywhere we went we heard the same plea - from local communities, government agencies, local businesses - for a reversion to a more natural, dynamic water management regime that would support fisheries, tourism, pastoralism and water transport. As we stood by the sluice that connects Lakes Kartal and Katlabuh, I asked Aphanacy Zechkov, Head of the Izmail Water Resources Department, what 'success' would look like from his perspective. His response seemed to speak for many of the people we met during that visit:

"In the past we modified the natural system. Now we understand the consequences and need to reverse some of those changes. We will have been successful when those reversals lead to a restoration of the fishery and a thriving tourism industry providing jobs for local people".

David Thomas

Swaffham Prior Parochial Charities

At this time of year, the above charity would like to remind Pensioners to apply for the annual Christmas Grant.

The Charity is here to help not only Pensioners but any person who feels they are in need of assistance and not only at Christmas time but also during the rest of the year.

If you should wish to discuss this further, please do not hesitate to contact me.

Pam Waters
Clerk to the Trustees
01638 741035

Tales from a Reach Garden

This November has been surprisingly lovely and relatively mild so far, though wintry weather has been forecast for the coming weeks. The autumn leaf colours this year have been astonishing in our garden, but I enjoy seeing autumn leaf colour which provides a good excuse for walking through Reach woods, Anglesey Abbey or Wicken Fen.



Copper beech in Autumn

In spite of all these lovely trees close to us here in this corner of Cambridgeshire, we live in a county noted for having the fewest trees, in a country (Britain) that is one of the least wooded in Europe. It's a sad statistic and alas, is about to become worse - in our garden. One of the oldest ash trees in our garden is being attacked from above and below thanks to a combination of ash die-back in its canopy and honey fungus in its roots and needs to be removed before it becomes too dangerous. It is already shedding branches, which so far have been caught by neighbouring trees. We intend to plant something more resilient to honey fungus in its place. Elsewhere an old Leylandii hedge will also be replaced by yew. We shall be busy planting trees over the next few months.

Elsewhere in the garden some flowers are still blooming though frosty weather will soon bring that flowering to an end. We've had a lovely flowering display from our Nerines which started in September and are still blooming. Perennial fuchsias (e.g., fuchsia magellanica) also have a long flowering season and ours are still in flower thanks to the relatively mild November weather.

We deliberately leave some areas for ivy to grow in the garden because ivy is one of the last native flowering plants to bloom, providing some much-needed pollen and nectar late in the year. It has been surprising how many bees, hoverflies and wasps have been buzzing around the ivy flowers recently. The dark berries which are produced from this pollination are high in fats and are a particular favourite with birds such as redwings in late winter/early spring.



Ivy flowers – food for insects in late autumn

In the vegetable garden we planted some garlic cloves in October, for a crop to be lifted in June-July, or until fungal rust damages the leaves – whichever happens first. Garlic depends on frosts to split the bulbs into several cloves, which makes autumn a good time of year to plant them. Planting them in March is risky if you want a big bulb with lots of cloves.



This year we were fortunate because we had lots of frosty weather in April and May, in fact it had been so frosty that even the larger cloves had split further, so some of the garlic looked like double bulbs. However, in previous years we have lifted a few garlic bulbs with no separated cloves at all i.e., a single-clove bulb. They can still be used in the kitchen, but unless you like loads of garlic in your meal, you won't want to use the whole bulb and will have to store the remainder in the fridge to prevent it from going mouldy, but it would need to be used up within a week.

All that remains to be done in the vegetable garden is to mulch the empty beds with organic matter, such as well-rotted manure or compost, and leave the worms to do the mixing. To protect the surface from weeds, the beds will be kept covered. Apart from that we'll be picking cabbages and kale to eat fresh over the next couple of months and enjoying the other stored fruits of our labours.

Danuta Gibson

Food Focus

One Dish Meals

As usual I'm desperately seeking ways to simplify an area of our lives that I seem to spend an inordinate amount of time on. Hands up if you too are fed up with cooking? Occasional interest has surfaced in recent months after all interest was buried deep during the lockdowns and the ensuing period of restrictions.



We were on a rather tedious rotation then. Purposefully we haven't got back to pre-pandemic levels of busyness which in most respects is an improvement, but in terms of catering, it sometimes feels like a backward step. I'm grateful to the sudden appearance of the cheery yellow burger van in Prior or Reach occasionally and the fact that you can mostly book last minute with success. I thought all my prayers were answered when I heard about Rukmini Iyers one dish dinner recipe books and with excitement bought two - the Roasting Tin and the Roasting Tin around the World and if I can clear out some underused recipe books will also be buying the quick one.

Unfortunately, I wasn't hugely impressed with my first foray into her meals though. I cooked Malaysian roast chicken with coconut, lemongrass and squash for all of us.

The children scraped off all the sauce (which was mild - but made me think why didn't I just cook their chicken separately) and I was left with quite a lot of mildly curried squash which I had to turn into soup as no-one was going to eat it on its own. The dish itself used lots of wonderful fresh herbs and spices, however was a bit of a let down in terms of the time it took to prepare it and disappointingly, in my opinion, lacked flavour too.

Fortunately, the soup was quite successful, but any benefit gained from the one dish meal was slightly lost with the need to cook something else with the leftovers! Anyway, I'm still hopeful that there are better one size fits all recipe suggestions waiting within these rather lovely looking recipe books and I'm enclosing a couple which I'm tempted by below;



Roast Chicken with Fennel, Lemon, Shallots, Garlic and Mustard Mayo Serves 4

Ingredients

300g fennel, thinly sliced
12 shallots, quartered
1 lemon, sliced into half-moons
6 cloves of garlic, bashed
a few sprigs of thyme
4 free-range chicken breasts, skin on if available
sea salt and freshly ground black pepper
olive oil

For the mustard mayo:

4 heaped tbsp of mayonnaise
2 heaped tbsp of mustard
2 tsp honey

Method

Preheat the oven to 180c fan/200c/gas 6

Place the fennel, shallots, lemon, garlic and thyme in a large roasting tin, and put the chicken breasts on top. Season generously with sea salt and freshly ground black pepper and drizzle everything generously with olive oil.

Mix well to make sure the vegetables and chicken are evenly coated in the oil, then transfer to the oven to roast for 30 minutes.

For the sauce, mix together the mayonnaise, mustard and honey and set aside. Let the chicken rest for 5 minutes out of the oven, then serve hot with the mayonnaise.

Orzo with chilli & garlic roasted broccoli, lemon, parmesan & walnuts

Serves 3-4

Ingredients

- 1 large head of broccoli, cut into small florets
- 1 onion, finely chopped
- 2 tablespoons olive oil
- 2 cloves garlic, crushed
- chilli flakes
- sea salt
- 250g orzo
- 500ml vegetable stock
- 50g toasted walnuts
- 60g Parmesan, grated
- 1/2 a lemon, zest and juice
- 100g spinach, roughly chopped

Method

Preheat the oven to 200C fan/220C/gas 7

Mix together the broccoli florets, onion, olive oil, garlic, chilli flakes and sea salt in a roasting tin then transfer to the oven and roast for 10 minutes.

Stir in the orzo and the vegetable stock, cover carefully with foil, then return to the oven for a further 15-20 minutes, until the stock is absorbed. Pop the walnuts on a baking tray in the oven for the last 5 minutes to toast.

Remove the foil from the orzo and stir in the parmesan, lemon zest & juice. Season with more sea salt as needed. Stir in the spinach, then scatter over the toasted walnuts and serve.

Catherine Gibson



Letter from the Vicarage

Christmas is coming! There are so many hopes and expectations this year, and for many the focus will be on arranging the family gatherings and celebrations that weren't possible last year. We're planning for more 'normal' Advent and Christmas events and services, though still being careful to keep each other safe, with some adaptations in the way we do things.



We would love to welcome you to any of our services, including the Christingle service in Reach on Sunday 23rd December at 6.30pm. We're also hoping to have a special service to mark the closing of the building for the start of the building work and will confirm that when we have final details. At St Mary's, there will be a Christingle on Sunday 5th December, Carols by Candlelight on Sunday 19th December, Crib services and Midnight Communion on Christmas Eve and Celebration on Christmas Day. For all services we'll be asking everyone to wear a face covering for singing and we are retaining some socially distanced seating which will limit capacity, and so nearer the time we will be publishing details of how to book in, where appropriate.

For some, there will also be the option for joining in via Zoom or Facebook. In St Mary's, we'll have our Remembering Tree again in the weeks leading up to Christmas, to place stars on the tree to remember loved ones. The church will be open each day, for anyone to be able to pop in.

St Mary's churchyard has always been a special place of peace and over the last 18 months, we've been discovering how precious it has been as a meeting place, and place of encounter. We've been working hard on our conservation plan and are really grateful to Wild Burwell and other members of the community for helping us. During December, look out for Angel Trails and an outdoor nativity scene. We're also developing a plan for Reach churchyard when all the building work is finished, which includes ways to preserve and enhance the biodiversity of the site.

Community is so important to all of us, and to celebrate our amazing community we are partnering with the Co-op and Burwell Community Radio to launch the Community Angels Awards. Please send your nominations to Stephen.smith@coop.co.uk or PM Steve on Facebook. You can nominate anyone who has made a difference to you, anyone you know, or in the community. All nominations please by the 9th December with the award Ceremony in St Mary's Churchyard on Saturday 11th December hosted by the Co-op, St Mary's and Burwell Community Radio.

If you'd like to find out more about who we are and what we do or get more involved in the life of St Mary's and St Etheldreda's, please get in touch and also if you would like to chat or if we can pray for you, if you are struggling, or know someone who is, or need help accessing Ely foodbank.

This Advent and Christmas, as we hear once more the story and message of the coming of Christ, may each of us know hope, peace and joy through him.

God bless you

Eleanor Williams Vicar of Burwell with Reach

Tel: 01638 741262

Email: vicar@stmarysburwell.org.uk

Web: www.stmarysburwell.org.uk

Facebook: <https://www.facebook.com/stmarysburwell/>

Reach Church Reordering

As many of you will already have heard, we are delighted to say that at last we have received all permissions we need for the alterations to Reach Church and the Chancellor granted the faculty which permits us to do everything we asked to make Reach church a warm, bright, flexible and welcoming building for the use of the church and the whole community.

This includes installing a small kitchen, a toilet and better heating, lighting and an audio-visual system. To provide greater flexibility, some of the pews will be replaced with stackable chairs and those remaining will be fitted with castors so that they can be pushed aside if necessary. We also obtained planning permission from ECDC to redesign the path to provide better access to the church for those with mobility issues and this will include developing a biodiversity plan to landscape the churchyard to improve and protect the wildlife on the site. Preparation of this is in progress and will include reference to the valuable bees who have lived in the church roof for many years.

The builders will start in earnest in January 2022, but various preliminaries will be done before then. The first of these was the removal of the organ, which happened in mid-November. It is going to a new home in the church of Carrion de los Cespedes, Seville, Spain, where it will be used several times a week, rather than only a few times a year as it is now. It will be replaced by a digital instrument which will take up less space and will be more flexible for a variety of uses and music styles. The photo show the work in progress and we have been promised a picture of it when it is installed in Spain. It is hoped that some panelling found in storage from the organ played by Maisie Whitehead, prior to the installation of the one now removed, will feature in a memorial acknowledging her generous bequest.



The removal of the organ means that, for safety and security reasons, it will not be possible for the church to be left open every day, but we will hold one or two more services there in early December. The church will have to be emptied of all its contents before Christmas so that it is ready for the builders at the beginning of January, so from late December onwards, services will be held in the Village Hall. The first of these will be the Christingle Service on Thursday 23rd December at 6.00pm. We have been advised that the building work will take about 10 months to complete and so we look forward to re-opening next autumn.

Pat Chalmers

On behalf of the Reach Development Group



Church Services at Burwell and Reach

December 2021	St Mary's Burwell	St Etheldreda's Reach
Sunday 5th Advent 2	10.00am All Age Service with baptism 4.30pm Christingle Service	9.00 am Holy Communion
Wednesday 8 th	10.30am Holy Communion	
Sunday 12th Advent 3	10.00am Holy Communion	TBC when building date is confirmed
Wednesday 15 th	10.30am Holy Communion at Ness Court	
Sunday 19th Advent 4	10.00am Holy Communion 6.30pm Carols by Candlelight,	TBC when building date is confirmed
Wednesday 22 nd	10.30am Holy Communion	
Thursday 23 rd		6.00pm Christingle service
Friday 24 th Christmas Eve	2.00pm Nativity Crib Service Repeated at 3.30pm 11.30pm Midnight Communion	
Saturday 25 th Christmas Day	10.00am Holy Communion	TBC when building date is confirmed
Sunday 26th Christmas 1	No service	
January 2022	St Mary's Burwell	St Etheldreda's, Reach
Sunday 2nd Epiphany	10.00am Holy Communion	TBC when building date is confirmed
Wednesday 5 th	10.30am Holy Communion	
Sunday 9th Epiphany 2	10.00am Holy Communion 4.00pm Messy Church	TBC when building date is confirmed
Wednesday 12 th	10.30am Holy Communion at Ness Court	
Sunday 16th Epiphany	10.00am Holy Communion	
Wednesday 19th	10.30am Holy Communion	
Sunday 23rd Epiphany 4 Week of Prayer for Christian Unity	10.00 Churches Together United Service at St Mary's	8.30am Holy Communion (note new time)
Wednesday 26 th	10.30am Holy Communion	
Sunday 30th Presentation	10.00am Holy Communion	



Scan the QR code to go to our website for more details and links to book for services in church buildings and to join in via Zoom and Facebook
<https://stmarysburwell.org.uk>
www.facebook.com/stmarysburwell



Know Your Parish Council

Your councillors are:

Charlotte Cane	Chair	741064
Nick Acklam	Vice Chair	743749
Cristine Fletcher	Councillor	07763 529886
David McMillan	Councillor	741259
Andrew Trump	Councillor	07980 955490
Hannah Web	Councillor	
Vacancy	Councillor	

Charlotte Cane	District Councillor
John Trapp	District Councillor
Joshua Schumann	County Councillor

Your Clerk is Susan Bailey
29 Great Lane Reach CB25 0JF; 01638 743794
clerk@reachparishcouncil.org

Meetings take place, normally in the Village Hall (with alternative arrangements if Covid-19 restrictions are in place), on the first **Tuesday** of each month. They start at 7.45pm and all Reach villagers are welcome to be involved.

Know Your District Councillors



The Greater Cambridge Partnership (GCP) has launched two public consultations on proposals for transport links in and around Cambridge. Some of these proposals have significant implications for our routes into Cambridge, especially along the Newmarket Road.

The Making Connections consultation closes on 20 December and more information can be found at www.greatercambridge.org.uk/making-connections-2021

The Cambridge Eastern Access consultation closes on 22 December and more information can be found at www.greatercambridge.org.uk/NewmarketRd2021

They will be hosting events online throughout the consultation period, and these will be advertised on the consultation links above.

As you may be aware, there is a local group, the AtoB 1102, who are looking at the implications of these proposals for our area. To find out more about them, register your views and see their campaigns, please see their website at <https://atob1102.org/>. The proposed changes are significant for our area. For some reason, East Cambs is not part of the GCP – so we need to make our voices heard by responding directly to the GCP consultations and working with the AtoB 1102 group.

The Combined Authority is also seeking views on transport and connectivity. You can give them your views at <https://yourtcp.co.uk/>.

An electric bicycle ride took place in October to mark the works currently ongoing to install the flagship heat network in Swaffham Prior to get the community off oil and onto renewable energy. The event included a tour of the site where the energy centre is being built for the project. The media took interviews which reached as far as Japan.

Last month the Chair of the County Council's Environment and Green Investment Committee was taken on a tour round part of the area proposed by Sunnica for their colossal (and controversial) commercial solar farm and battery storage stretching for miles across the East Cambridgeshire and West Suffolk countryside east of Burwell. Cambridgeshire County Council has already expressed its concern to the Secretary of State about the scale of what is proposed. The tour began at The Ark Church in Isleham, then took in Freckenham, Red Lodge, Kennett, La Hogue, and Chippenham—and that was just part of this massive proposal. They saw some of the fantastic views, working farms, stud farms and other parts of this wonderful area which will be hugely affected if the Planning Inspectorate approves the plans. Council officers are expecting that Sunnica will submit their planning application to the Secretary of State on Friday 12 November. The application will be determined by the Planning Inspectorate, not by the District or County Council. You can follow the progress of the application and register your interest at - <https://infrastructure.planninginspectorate.gov.uk/projects/eastern/sunnica-energy-farm/>.

Meanwhile, applications for more solar farms continue to come forward in our area and yet there is still no strategic overview for alternative energy sites in East Cambs – each application is considered in isolation with no thought for the cumulative impact or the necessary infrastructure. We will continue to call for this strategic overview so that we get the right balance between green electricity generation, farming and open space.

At the last Council meeting we had a very interesting presentation from Superintendent James Sutherland (Cambridgeshire Police) about a pilot scheme for speeding and parking enforcement in the District. The Council agreed that the Cambridgeshire Police Pilot Scheme to integrate community-based enforcement of speeding, anti-social and illegal parking under Section 38 of the Police and Crime Act 2017, be supported. Furthermore, Cambridgeshire Police have proposed to target identified 'hot spots' in the District with enhanced on-street and speeding enforcement in 2021/22. We hope this scheme will be successful but feel it would have been better for the Council to take on civil parking enforcement, which is a tried and tested route followed successfully by most District Councils.

The change in the operation of Committees in which members should submit questions in writing before the meeting was useful and more efficient as it was still possible to ask follow-up questions in the Committee. The papers will also be issued more than a week before the meeting to give members more time to reflect on the contents.

Our next Councillors' Surgery will be held by zoom on Wednesday 19th January at 6.30pm. Meeting ID: 865 7631 8040, Passcode: 490667. If you prefer to join by phone, the number is 01314 601196.

We do hope that you will get a good break this Christmas and the chance to meet with family and friends.

Charlotte Cane

charlotte.cane@eastcambs.gov.uk 01638 741064

John Trapp

john.trapp@eastcambs.gov.uk 01223 812120



Lucy Fraser



As 2021 draws to an end I wanted to wish you all the best for the festive season, after what has been a difficult year for so many.

I have been proud to recognise those in our communities that have gone above and beyond to help others throughout the pandemic: collecting medication and groceries, to looking out for elderly neighbours or volunteering for local causes. I am pleased to have recognised this hard work through the Cambridgeshire COVID Community Champions Awards that I have organised, spotlighting these stories of selfless acts. I will shortly be announcing the winners and, when parliament opens again to visitors I will be holding a special event to recognise the hard work of nominees, along with my neighbouring MPs. Their stories will be shared on my website and social media as well as with the local community.

In September I was delighted to be appointed a new post in government as Financial Secretary to the Treasury. In the budget I was pleased to see that locally, Cambridgeshire will receive funding for schools, health and transport. All Cambridgeshire schools will receive a share of the additional £1.8 billion of catch-up funding, bringing total catch-up funding to £4.9 billion. Cambridgeshire County Council will receive £1,573,580 from the Workforce Recruitment and Retention Fund for Adult Social Care, and the area will receive a share of £70 million Zero Emission Bus Regional Area funding to transition around 30 buses on 5 park and ride routes.

I do hope that you all enjoy a wonderful festive period and have a happy new year!

Lucy Frazer

Reach Cricket Team 2021



The penultimate weekend of the season ought to have been a corker – but Saturday’s planned friendly against the Teluga Association of Cambridge fell through and Sunday’s tournament at Ickworth Park was rained off after we had won our first match and were closing in on victory in our second. To cap the frustration, we arrived back home to find the ground in Reach as dry as a Mormon wedding. That left just one more game in which to show off our talents

Sunday 26 September

White Walkers (259 for 6) beat Reach (217 all out) by 42 runs

In spite of pitch preparation being compromised by one mower which broke down and another which ran out of petrol, wickets were hard to come by – until, that is, our captain for the day, Wylie Mead put himself on. An expensive but productive spell saw him take 4 wickets for 54 runs – just one wicket away from having to buy his team mates a jug of beer, not an easy feat when you are 12 years old.

Reach’s innings began with a contest within a contest - Michael Mead and Tim Davies began the match both on 482 runs for the season. Who would end the season as our top run-scorer? Tim reached 13 before his sticks went flying, while Michael reached 69 – the highlight of his innings being an all-run six with Chris Bridgeman.

Gavin Taylor made 32 and Archie Fordham irritated the opposition with 33 in a last wicket partnership with Ben Cooke as the damps of a late September evening descended. But it wasn’t enough. Look down the White Walkers’ scorecard and we appear to have an excuse for defeat: they fielded Alistair Cook. But let’s not boast – it wasn’t the real one.

Our season awards:

Player of the year: Michael Mead

Gentleman of the Year: Rob Steed

Champagne moment of the season: Hector Keutgen’s angry innings to secure victory against Mellis CC

Top of the batting averages

Michael Mead, 551 runs, average 34.44

Tim Davies, 495 runs, average 33.00

Chris Bridgeman, 345 runs, average 19.17

Top of the bowling averages

Tim Davies, 21 wickets, average 16.62

Will Day, 18 wickets, 11.11

Rob Steed, 18 wickets, 20.89

Ross Clark

Lottery Fraud

What is lottery fraud?

Criminals will contact unsuspecting victims informing them they have won a lottery or prize draw. The victim is then informed that they will need to pay an advance fee in order to receive their winnings. In reality, the winnings are non-existent and it is an attempt to steal the victims money, personal or financial information.

Between April and October 2021, Action Fraud received 629 reports of lottery fraud, with 89 per cent of reports mentioning well-known prize draws. Impersonation of People’s Postcode Lottery accounted for almost half (49 per cent) of all reports. Almost three quarters of victims (70 per cent) were aged over 50, with those aged over 65 accounting for 40 per cent of reports.

Fraudsters use gift cards as a form of payment as they can be easily redeemed and sold on. The criminals don’t need the physical card to redeem the value as they ask the victims to share the serial code on the back of the card with them. In other instances, victims reported being asked for personal and financial information in order to obtain their alleged winnings. Some victims reported providing their bank details thinking they would be sent a small payment to verify the account. In reality, criminals will use these details to steal the victim’s money.

Unsolicited offers of large sums of money in return for a small upfront payment should always raise a red flag. Taking a moment to stop and think before parting with your money or information could keep you safe.

Could it be fake? Remember, you can’t win a prize in a competition you didn’t enter. It’s okay to reject, refuse or ignore any requests. Only criminals will try to rush or panic you.

If you think you’ve been a victim of fraud, contact your bank immediately and report it to **Action Fraud** online at actionfraud.police.uk or by calling 0300 123 2040.

Parish Council Meeting Minutes

Minutes of Reach Parish Council meeting held in the village hall on Tuesday 5th October 2021 at 7.45pm

Attendance

Charlotte Cane	Chair	Not Present
Andrew Trump	Councillor	Present
David McMillan	Councillor	Present
Cris Fletcher	Councillor	Present
Nick Acklam	Vice Chair	Present
Hannah Webb	Councillor	Present
Susan Bailey	Clerk	Present
Charlotte Cane	District Councillor	Not Present
Joshua Schumann	County Councillor	Not Present

Apologies for absence – Apologies were received from councillor Cane. Councillor Acklam took over the Chair.

Forum for members of the public.

Several members of the public attended the meeting.

One spoke in support of planning application 21/01315/FUL. Detailing the positioning of the build and its limited effect on the visual aspect on approaching the village.

Another member spoke to show concern regarding 21/01334/FUL and the use of the wording temporary relating to the caravans.

Another member spoke to give details of the requirements for work on the power on the green.

1. **Declaration of Interests** There were none.

2. **Planning**

21/01315/FUL - 16 Chapel Lane, Reach. Construction of wooden summer house and wooden shed, both on concrete slabs.

Local plan - The proposed summerhouse & current platform/hardstanding for it, lies outside the proposed development envelope, however, the plans seem to meet regulations regarding permitted development, this project is going through the official planning route due to the section 52 Agreement connected to the property.

Previous applications/appeals - This is a retrospective application, -the hardstanding for the summerhouse is already constructed.

Loss of sunlight - none

Overshadowing/loss of outlook - Proposed summerhouse will be visible from public byway which skirts this northern edge of the village.

Overlooking and loss of privacy - N/A

Highway issues: Traffic generation, Vehicular access, Highway safety - N/A

Noise or disturbance resulting from use, including proposed hours of operation - N/A

Smells and fumes - N/A

Capacity of physical infrastructure - N/A

Deficiencies in social facilities - N/A

Storage and handling of hazardous materials and development of contaminated land - N/A

Loss or effect on trees - N/A

Adverse impact on nature conservation interests and biodiversity opportunities - none

Effect on listed buildings and conservation areas - Site is adjacent to conservation area.

Incompatible or unacceptable uses - none

Local financial considerations offered as a contribution or grant - N/A

Compliance with Reach Design Code - This development would sit within a sensitive Fen-edge landscape

Policy RCH12 ciii

Compliance with Reach Landscape Analysis - See Excerpt from Landscape Appraisal in conclusion, below

Conclusion of outcome: - No objection, but submit comments There is a section 52 Agreement connected to this property, which although may not preclude buildings of this type, there is concern that the cumulative impact of outbuildings on this site, either side of the public byway, negatively affects the village edge and Fen-edge aspects in this area of the village, as outlined in the Reach NP Landscape Appraisal by Alison Farmer and Associates: *'This area is sensitive to development within the wider fen landscape where it may undermine rural qualities or open expansiveness. It is also sensitive to development behind the existing built edge on the chalk, which may interrupt the strong visual, physical and historical connections between the edge of the village and its wider fenland setting. For these reasons development should be avoided in the vicinity of The Hythe and on the slopes leading to the rear of the village'* (p. 28- Sensitivity/Capacity)

21/01309/FUL - : 7 Ditchfield, Reach. Construct four bedroom house with associated parking.

Local plan - No comment

Previous applications/appeals - No comment

Loss of sunlight - There will inevitably be some loss of sunlight, but no concerns were raised by neighbours.

Overshadowing/loss of outlook - The property height is similar to the existing houses. The property opposite will have an obstructed view to the open countryside behind.

Overlooking and loss of privacy - The property line is slightly behind 9 Ditchfield which the owner is happy with as it reduces overlooking.

Highway issues: Traffic generation, Vehicular access, Highway safety - Ditchfield is narrow and if vehicles are parked on the street there is limited access for larger vehicles and concerns were expressed by neighbours about emergency vehicle access.

The plans provide for off-road parking which should prevent a problem, but it would be good to raise the issue during construction and ask that contractors do not park on Ditchfield. Access is available from the byway behind the property, and it is suggested that contractors are required to use this access during the construction.

Noise or disturbance resulting from use, including proposed hours of operation - Proposed restriction as this is a residential area: exists in current proposal.

Smells and fumes - N/A

Capacity of physical infrastructure - The telephone wire from the pole to number 7 Ditchfield will need to be moved.

Deficiencies in social facilities - No comment

Storage and handling of hazardous materials and development of contaminated land - Usual precautions apply.

Loss or effect on trees - There will be a hedge removed which will be replaced by a fence.

Adverse impact on nature conservation interests and biodiversity opportunities - This is already a residential area with seemingly little conservation value.

Effect on listed buildings and conservation areas - None

Incompatible or unacceptable uses - Not applicable as already a residential area

Local financial considerations offered as a contribution or grant - No comment

Compliance with Reach Design Code - No comment

Compliance with Reach Landscape Analysis - No comment

Conclusion of outcome: - No objection but submit comments. Ask that contractors do not park on Ditchfield. Access is available from the byway behind the property, and it is requested that contractors are required to use this access during the construction. The back track is used for vehicular access to Highcrest house. Builders would also need to keep enough of the back lane route clear, to allow for this.

21/01265/FUL - Church Of St Etheldreda And Holy Trinity Fair Green. External works to provide level access.

Local Plan - In line with accessibility aims.

Previous applications/appeals - N/A

Loss of sunlight - N/A

Overshadowing/loss of outlook - N/A

Overlooking and loss of privacy - N/A

Highway issues: Traffic generation, Vehicular access, Highway safety - This makes no difference to vehicular access or traffic generation but will make access for people with walking difficulty significantly safer than the current access.

Noise or disturbance resulting from use, including proposed hours of operation - N/A

Smells and fumes - N/A

Capacity of physical infrastructure - N/A

Deficiencies in social facilities - This will improve access for people with walking difficulties.

Storage and handling of hazardous materials and development of contaminated land - N/A

Loss or effect on trees - The proposed path carefully sweeps round existing trees and bushes. The lower branches may need trimming back, but otherwise there will be no impact.

Adverse impact on nature conservation interests and biodiversity opportunities - N/A

Effect on listed buildings and conservation areas - The path and re-arrangement of the steps is sympathetically designed, and the materials used will be in keeping with their setting within a listed building's curtilage and a conservation area. The applicant will be using an experienced conservation contractor who has clear instructions on halting work should ground works uncover indications of archaeological significance.

Incompatible or unacceptable uses - None

Local financial considerations offered as a contribution or grant - None

Compliance with Reach Design Code - This delivers improved accessibility with high quality design and materials.

Compliance with Reach Landscape Analysis - N/A

Conclusion of outcome: - Fully support.

18/01397/DISA Land SW Of Hill Farm, Fair Green.

To discharge Condition 4 (Risk assessment of Contamination), 6 (Surface Water Drainage), 7 (Archaeology), 9 (Biodiversity Improvements), 11 (Access), 14 (Arboricultural Method Statement), and 15 (Arboricultural Impact Assessment) of decision dated 05/04/2019 for Demolition of existing agricultural buildings, construction of two detached bungalows, associated parking and infrastructure.

21/01334/FUL - Land SW Of Hill Farm Fair Green, Installation of two temporary mobile homes and associated infrastructure during construction work.

Local Plan - The site is outside of the development envelope in the existing Local Plan

Previous applications/appeals - The site has outline and detailed planning permission.

Loss of sunlight - N/A

Overshadowing/loss of outlook - No longer relevant, as detailed planning permission already granted.

Overlooking and loss of privacy - No longer relevant, as detailed planning permission already granted.

Highway issues: Traffic generation, Vehicular access, Highway safety - Surface treatment and drainage for the current by-way has yet to be agreed with Highways. The applicant has received conflicting advice from Highways but has stated that he is content to deliver whatever surface and drainage treatment Highways decide upon.

Noise or disturbance resulting from use, including proposed hours of operation - The proposed caravans will create no more disturbance and noise than the bungalows, for which permission has been given.

Smells and fumes - N/A

Capacity of physical infrastructure - No longer relevant, as detailed planning permission already granted.

Deficiencies in social facilities - No longer relevant, as detailed planning permission already granted.

Storage and handling of hazardous materials and development of contaminated land - Condition 4 sets out the mitigating actions re potential land contamination.

Loss or effect on trees - No longer relevant, as detailed planning permission already granted.

Adverse impact on nature conservation interests and biodiversity opportunities - No longer relevant, as detailed planning permission already granted.

Effect on listed buildings and conservation areas - No longer relevant, as detailed planning permission already granted.

Incompatible or unacceptable uses - No longer relevant, as detailed planning permission already granted.

Local financial considerations offered as a contribution or grant – None.

Compliance with Reach Design Code - N/A

Compliance with Reach Landscape Analysis - No longer relevant, as detailed planning permission already granted.

Conclusion of outcome: - No objection but submit comments. If permission is granted for the installation of two temporary mobile homes and associated infrastructure during construction work: it should be strictly time limited to 18 months from the time of approval or completion of the construction work whichever is sooner. (to ensure the caravans do not become semi-permanent); there should be a further condition requiring that any infrastructure associated with the caravans is removed and the area made good within 2 months of the removal of the caravans. (to ensure that the site is made good within a reasonable time.

The PC would like to see full details of the proposed surface and drainage treatment for the by-way before conditions 6 & 11 are discharged.

3. District Councillor Report

The Administration at East Cambs have instructed that Committees will change the way they operate. Previously items brought to committee would be discussed at length and members could ask questions in Committee. Now questions must be submitted in writing before the meeting and should be answered before the meeting. This gives members just a few days to read all the papers and submit questions, as the papers are issued just a week before the meeting. It also risks questions and answers no longer being heard in public. These new arrangements were put in place for September's meeting of Operational Services Committee. One of the items on that Agenda was a proposal for enforcement of car parking violations, given that the Administration's original proposal was unworkable. A Committee member sent several questions to the paper's author but was told that they were away and would not be attending the Committee meeting. At the meeting it was announced that that item would be deferred for consideration by Full Council in October. The Committee meeting was on the 13 September and as of 4 October the questions have still not been answered. It is clearly frustrating when we are asked to consider new initiatives, which we might want to discuss locally, and we are not given full information. It is particularly concerning in this case as the member was following the new requirements but has still not received answers despite one of the claimed aims of the new procedure being that it "enables officers to provide all Committee members with a fully informed answer to benefit member discussion."

Operational Services Committee also approved the outdoor sports facilities and playing fields strategy which includes the aims of "securing provision, improvement and maintenance of outdoor sport and playing pitches across the district". This was in the same month that consultation closed on the Council's plans to demolish the Outdoor Activities centre at Mepal and replace it with a crematorium and burial site. Interestingly, the Council's own consultation showed that an overwhelming majority of respondents do not support the proposals.

The Committee heard a presentation from Newmarket Citizens' Advice Bureau (CAB) in which it was noted that requests for advice had increased, notably for advice around benefits and tax credits, debts, employment, and relationships. That audits of the services and governance of Newmarket CAB had rated it as good. East Cambs funds the Newmarket CAB for around £23k per year. This funding was under review, so future funding is uncertain.

Finance & Assets Committee will meet on 5 October. One of the items on the Agenda is the East Cambs Trading Company Accounts for the Year ended 31 March 2021. The Committee will consider the Medium-Term Financial Strategy Update. This assumes that Council tax will rise by £5 each year from 2022 and that inflation will be 2% (although the Bank of England is predicting 4%) and still notes that in order to set a legal budget for 2022/23 East Cambs will need to deliver:

- Efficiencies in the cost of service delivery
- Reductions in service levels
- Increased income from fees and charges
- Increased commercialisation via its trading companies

One of the cost reductions which we fear the Administration may impose is the grant to Newmarket CAB, putting its services to local residents at risk, and thereby removing an independent advice service. With the significant losses made by East Cambs Trading Ltd, it is difficult to see how the trading companies are going to contribute other than through the interest which ECTC pays to the Council and that is fixed at just 3.5%.

Observations on the budget: The planned increase in Council Tax is about 3.5%, and the ECDC income from Council Tax is about £4.5 million; interestingly, the parish precept is just over half of the income that ECDC receives in Council Tax; the savings required in three years' time is almost £4 million.

4. County Councillor Report No report received.

5. Minutes of previous Meeting

Minutes approved as correct.

6.1 Reach Grant Fund Nothing to report.

6.2 Finance

PKF Littlejohn LLP have completed the audit, concluding the PC accounts have been kept in accordance with Proper Practices and no other matters have come to their attention giving cause for concern that relevant legislation and regulatory requirements have not been met.

Cricket Pavilion.

Hortons Portable Buildings require a 50% deposit, £10,714.51. The PC are able to claim this from Amey Cespa, however the PC has to pay prior to the claim. The 11% match funding also needs to be paid prior to the claim. The cricket club have transferred £1,178.60 to the PC to cover this. PC cheques have been raised for both these amounts.

6.3 Parish Council Members

Councillor McMillan spoke to give an update on the large vehicles that had been using the Fair Green/Great Lane corner. There had been several days when problem arose. These large vehicles and did not have a derogation to use the corner and were very dismissive of this. **Councillor McMillan** to write to Highways, NUF, and Mr Hurrell who took part in these discussions prior to the summer.

Councillor Webb had asked her near neighbours about wild flowering the verges. Most responses were positive although one concern was the difficulty of getting to cars parked in the area if the grass grows longer. Councillor Acklam was still awaiting a response from Highways.

6.4 Play Spaces Nothing to report

6.5 Rights of Way Nothing to report.

6.6 24Acres Committee

The new benches are now in place.

6.7 Neighbourhood Plan

Consultation on the draft Plan was completed in late July. The Group received 57 responses offering over 300 substantive comments which is very good for exercises of this kind.

There are no objections to our draft from statutory consultees, including ECDC.

The great majority of responses from residents were positive - approval for the key proposals in the draft Plan is always above 71% and, in most cases, higher than that. Furthermore, many of the comments are supportive, offer constructive criticism or make a reasoned case for change. A number are complimentary & appreciative of the Group's work over the last two and half years. However, a petition raised by one respondent, seeking maintenance of the existing village development envelope, attracted 90 signatures. The consolidated responses will shortly be posted on the NP webpage. Unfortunately, we cannot publish the petition because we understand that to do so would breach GDPR guidance.

The Group is now working through what is a large amount of material before deciding on next steps.

The consultation exercise generated a strand of personalised commentary, much of it directed at Councillor Acklam. There are significant inaccuracies within this, and it diminishes the work and roles of other members of the Group and indeed the PC. Reluctantly Councillor Acklam concluded that to remain in the Project Group would distract from delivering the Plan and has therefore resigned.

Councillor Acklam continues to believe that an approved Neighbourhood Plan that accurately captures the sentiments of the village as a whole and is supported by a body of free-standing evidence would give Reach the strongest possible voice in future planning issues and on travel and environmental concerns on which many residents feel passionately. The Group is very close to creating such a Plan and it will be for villagers to decide whether to endorse it or not.

The PC were sorry that Councillor Acklam had resigned and thanked him for his hard work on the NP and for getting it this far.

6.8 Friends Of Reach Wood

The wildflower mix planting had taken place in the designated area, and new benches had been put in place. Steve Boreham is still working to get the WT to finish the cutting of the meadow.

6.9 A to B1102 Group

We had a positive meeting with County Councillors. – Alan Sharpe and Claire Daunton. Joss Schulmann neither attended nor sent apologies (apparently Burwell PC have also been chasing him for input). They understand the concerns and are now briefed but they were aware of their inability to actively participate as the matter is largely outside their role. It seems ECDC didn't wish to engage with GCP several years ago and since then relations have been remote. I got the impression party politics was something to do with it which is frustrating. As is shown below GCP seem to wish to engage outside "their area" when it suits them but otherwise not. It feels rather as if they are already a way down a certain track that they don't want to have their current thinking disrupted.

The actions arising from this meeting are as follows:

1. Set up meeting with GCP to challenge their interpretation of the Scope of their Remit – aim – to get GCP to accept that they have a responsibility for the impact of their actions in the whole of South Cambs and potentially beyond (given investment in Greenways), or at the very least to facilitate dialogue with other key stakeholders to develop combined solutions to facilitate modal shift for those entering into the GCP area:
 - a. Claire to discuss with colleagues on the GCP with a view to arranging a meeting
 - b. A to B1102 to confirm Lucy Frazer is willing to support this (update – yes, she is and is ready to be called to a meeting)
2. Claire to explore issues raised through involvement in "Mayor's Review of Buses" and see what opportunities there are for support for re-development of services for this area
3. Alan – through role on Overview & Scrutiny Committee, to challenge assumptions in evolving Local Transport Plan and fall-out from CAM concept development spending – key aim to focus attention the development of transport "spokes" including the Cambridge – Mildenhall spoke
4. A to B1102 Group to develop concept of local Park & Ride sites & "Fast Route" into Cambridge for bus travel
5. All to work to engage Josh Schumann in the dialogue.

Councillor Cane to try to get Councillor Schumann to communicate with the PC

6.10 Reach Fair 2022

Councillor Fletcher reported that the Reach Fair committee was well advanced in the planning of the Fair for 2022. All main parties had agreed to attend. Questions were asked regarding insurance and the accounts **Clerk** to research. **The Fair committee** intend to contact all households to enquire as to whether they wish the Fair to continue. It must be remembered how much benefit it brings to the village & what the village would not have or be able to do without it.

7. A-B1102 group contribution

The group is working without any financial support and therefore were asking for a small donation to cover ongoing costs. The PC agreed to donate £50 to the group.

8. OxCam Arc spatial framework consultation

Councillor Acklam produced a report to be submitted to the consultation.

Reach Parish Council is currently focused on two issues which, it considers, will be affected by the implementation of the OxCam spatial framework. The issues are:

Transport to and from Cambridge.

Reach is a small village 11 miles from Cambridge. Many of its residents travel regularly, if not daily, to Cambridge for work, education, medical support, entertainment, and shopping.

Public transport provision is restricted to a very limited bus service (and none at all on Sunday). The great majority of residents currently travel to Cambridge by private car using the B1102. We have some evidence that this experience is deteriorating, primarily because of population growth in communities on the B1102 corridor. There is regular rush hour congestion at Quy Roundabout which, of course, is before Reach residents can access the Newmarket Road park and ride site.

Reach PC had hoped that the transport strategy of the Greater Cambridge Partnership (GCP) would improve the speed, environmental impact and quality of journeys of Reach residents to and from Cambridge. Our current assessment is that this will not be the case. Indeed, some of GCP's proposals could make the situation worse. GCP's insistence that its remit does not stretch beyond the A14 is limiting our ability to engage with it and argue for changes such as relocating the Park and Ride site beyond the A14 and improving public transport provision to Reach. The A to B1102 Group that represents the interests of all the communities of the B1102 corridor feels similarly frustrated.

We hope that the OxCam Arc Spatial Framework can assist in providing a transport strategy that integrates the needs of Reach and the other communities of the B1102 with that of the city of Cambridge and that works to end any disadvantage that we, as residents on the far eastern edge of the Arc, might experience.

Green Energy Development

Reach PC supports the principle of increasing the UK's energy generation capacity and accepts the necessity of change in the countryside to enable that objective. Indeed, several significant green energy projects have already been built or have received approval in our locality. Our concerns are twofold:

- our locality is particularly attractive for solar farm schemes, being flat but generally not Grade 1 agricultural land with easy access to the National Grid via the Weirs Drove substation. Accordingly, there are a number of additional green energy development proposals at various stages in the planning system.
- there is no formally defined process within the current planning system to gauge the cumulative impact of a series of green energy developments in a particular area. Applications to the LPA for such schemes are considered in isolation. Furthermore, developments at the Weir's Drove substation, to enable the output from such applications to enter the National Grid, occur under permitted development and are not made explicit or considered by the LPA. The Sunnica Energy Farm the largest such proposal in our locality to date is deemed to be a Nationally Significant Infrastructure Project and is thus considered separately by the Planning Inspectorate. There is no mechanism for gauging a landscape's capacity to absorb green energy developments on this scale and thus determining the point at which the damage, principally visual intrusion, outweighs the benefits to the nation.

We anticipate that one of the measures of the success of the OxCam Arc will be an increase in demand for renewable energy. The laws of physics dictate that much of this energy must be generated locally. We therefore hope that the OxCam Arc Spatial Framework will encourage the development of a coherent, integrated and considered green energy development strategy that delivers an increase in renewable energy generation without imposing significant collateral damage on some communities, ours included, of the Arc.

9. Repairs to the power on the Green

David Parr has been researching what is required. Regular safety testing is required to the power on the green, this is well overdue and will be carried out. Repairs are required on what is in place a new RCD and upgrading the sockets for their waterproofness. Financial regulations do not require three quotations of this type of work. The PC agreed that the work could be carried out to a maximum budget of £500. **David Parr** to arrange.

10. Remembrance Sunday

It was agreed that a wreath would be purchased. People would be required to speak during the service. **Councillors** to consider.

11. Payments

E. on - Power on the green	£30.52
CR Contracting – mowing contract	£276.50
Fuse – IT licences	£102.53
NT – 24Acres lease	£10.00
Horton buildings - 50% payment Cricket pavilion	£12857.41
Amey Cespa – Cricket Pavilion match funding	£1414.32
S. Bailey – Clerk Salary	Confidential
S Bailey – Postage	£19.07

Parish Council Meeting Minutes

Minutes of Reach Parish Council meeting held at in the village hall on Tuesday 2nd November 2021 at 7.45pm

Attendance

Charlotte Cane	Chair	Present
Andrew Trump	Councillor	Present
David McMillan	Councillor	Present
Cris Fletcher	Councillor	Present
Nick Acklam	Vice Chair	Present
Hannah Webb	Councillor	Not Present
Susan Bailey	Clerk	Present
Charlotte Cane	District Councillor	Present
Joshua Schumann	County Councillor	Not Present

Apologies for absence – Apologies were received from councillor Webb.

Forum for members of the public.

A member of the public attended the meeting to listen to the presentation and discussions.

1. Declaration of Interests

Councillor Cane declared an interest in solar energy.

Say No to Sunnica presentation

Councillor Acklam took over as Chair for this section.

On 2 November Catherine Judkins of the Say No To Sunnica Group and Nick Wright of the Alliance of local Parish Councils opposing the Sunnica solar and battery storage proposal outlined their case for opposing the scheme to Reach Parish Council. Sunnica Limited proposes a solar panel and battery storage scheme which would occupy around 2500 acres (about 1000 hectares) of productive arable land in Suffolk and Cambridgeshire. The scheme is 'nationally significant infrastructure project' and, as such, will be considered by the Planning Inspectorate rather than by the local planning authority. Sunnica is scheduled to submit its application to the Inspectorate on 12th November.

If approved the scheme would be the **largest such development in Europe and the largest battery storage scheme in the world.** It has attracted strong opposition from the communities most obviously affected villages such as Isleham, Snailwell and Red Lodge. MPs Lucy Frazer and Matt Hancock, the MPs whose constituencies would be affected, have stated their strong opposition to the proposal.

Catherine and Nick's principal grounds for opposing the scheme are:

- There has been an absence of meaningful consultation. Sunnica is ignoring requests to engage with affected communities.
- It can never be carbon neutral, so will do nothing to support Net Zero targets. The scheme is designed to trade in electricity (buying energy when it is relatively cheap and selling when prices are higher). The scheme is therefore as much about storage as it is about generation of electricity.
- The likely Lithium ion storage technology, amounting to about 300 shipping containers of batteries, presents a significant fire risk. Fires that have occurred in similar installations elsewhere have been difficult and dangerous to put out. The firewater used becomes a serious environmental hazard. Highly toxic gases such as Hydrogen Fluoride are emitted while the fires burn, and these gas plumes can affect areas over 4.5km away.
- At the end of the scheme's realistic service life of around 25 years the land involved could be deemed 'brownfield' and thus would be vulnerable to housing and industrial development.

Our locality would be directly affected as the scheme proposes to connect to the National Grid at Weirs Drove in Burwell and would require significant growth of the substation. The transformers and associated equipment would be a sizeable and noisy presence in the local landscape, adding to the current expansion of the substation.

Reach PC supports the principle of green energy generation but has already raised concerns about the scale and quality of the Sunnica proposal. We now plan to register with Planning Inspectorate as an interested party so that we can make further representations. We are particularly focused on the cumulative impact of green energy developments on our neighbourhood. Sunnica's proposal would add to the 160 hectares of solar panels already approved on Burwell Fen and the expansion of Weirs Drove substation. The attached satellite image summarises all approved and proposed solar energy and battery storage developments in our area.

Reach PC would welcome the views of villagers to help shape what, if anything, we say to the Inspectorate.

Councillor Cane to back the position of Chair.

2. Insurance

Various enquires had been received from village groups regarding the PC insurance and what it covers. It was clarified that the PC had Public liability insurance for the use of the land controlled by the PC but is not liable and therefore insured for activity that takes place on this land. For example, the PC would be responsible and insured if the tennis court surface was damaged and an injury resulted from this but should a tennis player be injured by a ball or racket whilst playing tennis this is not covered, the PC had no liability for people's actions.

Therefore, the PC insurance does not cover injury from horse riding or playing sport on any of the areas of responsibility. Additionally, the insurance policy specifically excludes high risk activities which include equestrian.

The PC can only cover events for which it has responsibility, and which are organised by a PC committee. Therefore, The Events Team will continue to take out their own insurance. The Fair which for one year only is being organised by a PC committee will be covered by the PC public liability insurance. **Clerk** to obtain a quote for cancellation insurance.

The village Magazine states, "This magazine (which is fully funded from advertising) is approved and printed by Reach Parish Council". This is not true and will be removed from future publications.

3. Christmas Event approval

A grant application had been received, from The Events Team, for £550 for three Christmas Events.

1. Christmas Tree Lights Switch On, Sunday 5th December, 5pm to 6pm
2. Senior's Christmas Lunch, Wednesday 15th December 12.30pm to 3pm
3. Carols Around the Tree, Sunday 24th December 6pm to 7pm

Approved, payable against receipts.

A risk assessment had been received for the two tree events, approved. Another risk assessment will be supplied for the Seniors lunch event.

4. Reach Fair

Following discussion, it was approved that the Fair Committee would operate as a PC sub committee to run the Fair for one-year 2022. This would allow them to use the PC insurance. The Fair bank account would be transferred to a PC managed account with the Clerk and Councillors having access and as signatories. Fair committee members would be given access only to allow them to monitor receipt of payments. **Councillor Fletcher** to arrange.
A new Terms of Reference will need to be signed. **Clerk** to arrange.

Councillor Fletcher to provide a detailed budget for the next meeting including VAT chargeable income amounts.

Councillor McMillan volunteered to join the subcommittee. **Clerk** to ask Councillor Webb to join the subcommittee. **Councillor Fletcher** to ask Alex de Giorgio-Miller to join the PC.

Immediately following the 2022 Fair the PC subcommittee will be dissolved and another, group or organisation will be required should the village wish for the Fair to continue.

5. Planning – 21/01480/FUL - Erection of a 3 x 3m summerhouse - 26 Swaffham Road

Site visit by Andrew Trump and Nick Acklam on 28 October 2021

Development plan - Within the current development envelope. The proposal conforms to the Reach Design Code guidance on minimising surface water runoff in that building would sit on gravel rather than concrete.

Local plan - No conflict

Previous applications/appeals - None with bearing on the current application

Loss of sunlight - None

Overshadowing/loss of outlook - None

Overlooking and loss of privacy - Hedging and the fall of the land away ensures that there are no privacy issues for neighbouring properties. We understand that both neighbours are content with the proposal.

Highway issues, Traffic generation, Vehicular access, Highway safety - None

Noise or disturbance resulting from use, including proposed hours of operation - None.

Smells and fumes - None

Capacity of physical infrastructure - Not relevant

Deficiencies in social facilities - Not relevant

Storage and handling of hazardous materials and development of contaminated land - Not relevant

Loss or effect on trees - None

Adverse impact on nature conservation interests and biodiversity opportunities - None

Effect on listed buildings and conservation areas - None

Incompatible or unacceptable uses - None

Local financial considerations offered as a contribution or grant - Not relevant

Layout and density of building design, visual appearance and finishing materials - No issues identified. The proposed summer house is of wooden construction, will be painted in a muted rustic colour and will not dominate the garden.

The application was submitted because development of this kind that is within 2m of the boundary should be no more than 2.5 m high.

This application is marginally closer to the property line and 2.7m high.

Inadequate or inappropriate landscaping or means of enclosure - Landscaping does not seem necessary. The proposed development will be largely obscured from external sight by existing hedge and fence.

Conclusion of outcome: No comment to be made.

6. District Councillor Report

At the last Council meeting we had a very interesting presentation from Superintendent James Sutherland (Cambridgeshire Police) about a pilot scheme for speeding and parking enforcement in the District. The Council agreed that that the Cambridgeshire Police Pilot Scheme to integrate community-based enforcement of speeding, anti-social and illegal parking under Section 38 of the Police and Crime Act 2017, be supported. Furthermore, Cambridgeshire Police have proposed to target identified 'hot spots' in the District with enhanced on-street and speeding enforcement in 2021/22 be supported.

Although this pilot scheme won't be operational until the New Year, we think that identification of so-called 'hot spots' in our parishes should be undertaken by Parish Councils, and this will help in the selection and training of personnel for this pilot scheme. It is important to identify not only locations, but also the time of day where infringement of speeding and parking is rampant. Please send the list to one of us, and we shall forward it onto the Superintendent. This pilot scheme, most likely the first in the country, and the responsibility of the police, will be reviewed during the year. Charlotte and I still feel that the Council should take on the responsibility with Civil Parking Enforcement, which is done in almost all other Districts in the country.

The change in the operation of Committees in which members should submit questions in writing before the meeting was useful and more efficient as it was still possible to ask follow-up questions in the Finance & Assets Committee. The papers will also be issued more than a week before the meeting to give members more time to reflect on the contents. We shall see what happens in other Committees, and whether the chairman continues to allow supplementary questions.

A very limited partial update of the Local Plan will be going out to consultation. The update is to the Housing Requirement figure; the Council can demonstrate a more than required five-year land supply test, and thus restrict development to areas within the Local Plan or within Neighbourhood Plans. Although our Local Plan needs an update, particularly to incorporate energy efficiency and other climate protection measures, there seems little point in doing so until the Government stops dithering on its housing policy.

7. County Councillor Report

No report received. A report was obtained, from another County Councillor, and circulated after the meeting. This is reproduced below.

COVID-19 Overview

Cambridgeshire and Peterborough is now an Enhanced Response Area for tackling the Covid pandemic. Local leaders have welcomed the Government announcement, which follows an approach from both Councils and the Director of Public Health. Infections across the area are rising, especially in the 60+ age group. Rates are currently higher in most areas than in January's peak. The new status took effect from Monday 1 November and will last for at least five weeks. It allows the Council to push for additional support to:

- Accelerate and target 12-15 vaccination roll out to key areas and schools where infections are highest.
- Accelerate booster vaccinations for eligible groups who have had their second vaccination more than six months ago.

- Increase vaccination rate in areas with the lowest uptake.

The Councils will also enter into further discussions with the Department for Education about additional measures it can use in schools. In the meantime, they will continue to:

- Encourage secondary school teachers or pupils who are household contacts of positive cases to take daily lateral flow tests.
 - Advise schools that face coverings should be worn in secondary school communal areas, and that meetings should happen virtually where possible.
 - Encourage anyone who is a household contact of a positive case to take daily rapid tests, until a negative PCR test is received.
- For the general public government funded additional communications will also begin from next week. These will:
- Recommend wearing face coverings in crowded and enclosed areas where you come into contact with people you do not usually meet.
 - Remind people to get their vaccinations, test regularly and particularly before attending events, meet with others outside their households in well ventilated spaces and wash hands regularly and well.

More information at <https://www.cambridgeshire.gov.uk/news/enhanced-response-area-status-vital-to-protect-nhs-and-vital-services>
The pandemic is nowhere near over. Rates in Cambridgeshire are well above the national average. Our National Health Service is already stretched. We are now in a very serious situation, and this move by the Council and the Director of Public Health is both necessary and welcome.

Case rates in Cambridgeshire For the week 17-23 October:

- The case rate per 100,000 for Cambridgeshire was 508.4 per 100,000 (compared to 499.5 per 100,000 in the previous week).
- Cambridge, East Cambridgeshire, and Fenland reported an increase in case rates per 100,000 compared to the previous week; South Cambridgeshire and Huntingdonshire rates decreased.

Vaccinations

Booster vaccinations are now being offered to those who had their second jab more than six months ago.

<https://www.nhs.uk/conditions/coronavirus-covid-19/coronavirus-vaccination/coronavirus-vaccine>

Testing

Mobile rapid testing vehicles continue to visit sites across the county, offering on-the-spot lateral flow tests as well as test kits to take away and complete at home. You can also order kits to use at home. More information at www.cambridgeshire.gov.uk/rapidtesting

General Covid information

- <https://twitter.com/CambsCC>
- <https://www.cambridgeshire.gov.uk/residents/coronavirus/coronavirus-covid-19-overview>

County Council budget preparation

County Council committees are now considering options to address the Council's budget shortfall. The financial situation the new Joint Administration inherited included a gap of £22.2M between spending plans for 2022/23 and the resources available. We have already reduced this gap to £19.5M, and are developing proposals to enable a balanced budget to be presented to the Full Council in February. The overarching themes for the Council's Business Plan are

- Economic recovery
- Prevention and Early Intervention
- Decentralisation
- Environment & climate emergency
- Social Value
- Efficiency and effectiveness of Council services Land Use Framework for Cambridgeshire

Full Council

Items for the full Council meeting on Tuesday 9 November are:

- Appointment of the Council's new Chief Executive
- Various changes to the Council's constitution
- The parental leave policy for councillors
- The Pension Fund Committee annual report •

Motions on a Land Use Framework for Cambridgeshire, surface water flooding, resettlement of Afghan citizens, the Government's social care plan, and cuts to Universal Credit

- Questions to Combined Authority and Fire Authority representatives, and to the Council leader and committee chairs.

Hundred Foot de-silting Environment Agency de-silting works on the Hundred Foot have been cut short for the season, after local residents expressed concern that material dug from the river included clay and peat. Worries were expressed that this might mean damage to the channel and ultimately the barrier banks—something the Environment Agency denies. The District and County Councils have both written to the Environment Agency seeking more information. The Environment Agency has held a site visit, and the IDB called a special meeting and agreed a letter to the Environment Agency with a list of questions. The matter was also raised at Cambridgeshire's Flood & Water Partnership. The Environment Agency has engaged an independent consultant to review what has happened. Local residents and the IDB are gathering as much information as possible about the construction of the Hundred Foot.

Swaffham Prior heating scheme

An electric bicycle ride took place last month to mark the works currently ongoing to install the flagship heat network in Swaffham Prior to get the community off oil and onto renewable energy. The event included a tour of the site where the energy centre is being built for the project. The media took interviews which reached as far as Japan.

Sunnica planning application

Last month the Chair of the Environment and Green Investment Committee was taken on a tour round part of the area proposed by Sunnica for their colossal (and controversial) commercial solar farm and battery storage stretching for miles across the East Cambridgeshire and West Suffolk countryside east of Burwell. Cambridgeshire County Council has already expressed its concern to the Secretary of State about the scale of what is proposed. The tour began at The Ark Church in Isleham, then took in Freckenham, Red Lodge, Kennett, La Hogue, and Chippenham—and that was just part of this massive proposal. We saw some of the fantastic views, working farms, stud farms and other parts of this wonderful area which will be hugely affected if the Planning Inspectorate approves the plans. Council officers are expecting that Sunnica will submit their planning application to the Secretary of State on Friday 12 November. The application will be determined by the Planning Inspectorate, not by the District or County Council. Many thanks to Catherine Judkins and fellow local campaigners, and David Carford from the County Council, for giving up their time to talk through the scheme on site.

Ely Area Capacity Enhancements

The latest round of consultation on improving rail capacity in the Ely area opened for six weeks from Monday 18 October. The Ely Area Capacity Enhancement (EACE) programme aims to allow more trains to run through Ely by improving rail capacity and reliability for passenger services between key destinations and allowing more freight to operate between Felixstowe and the West Midlands. Proposals and options have been put forward for

- Remodelling the track layout at Ely North junction
- Level crossings at Queen Adelaide
- Level crossings at Stonea, Burgess Drove (Waterbeach) and Well Engine foot crossing
- Upgrading of another fifteen level crossings across the wider area.

The feedback from this consultation will help to progress the designs. Network Rail will then decide preferred options and, subject to further funding, submit a Transport and Works Act Order in winter 2022/23. The results of this consultation, together with the results from the Ely South consultation, are expected to be published as part of the Round 3 consultation, currently planned for summer 2022 (subject to funding). Consultation documents are available to view and download via the consultation area of the project webpage, along with an online survey form (link below). Hard copies of a consultation booklet are available on request: call Network Rail on 03457 114141 or email elyareacapacityenhancements@networkrail.co.uk

[https://www.networkrail.co.uk/running-the-railway/our-routes/anglia/improving-the-railway-in-anglia/ely-area-capacity-enhancement/Active travel](https://www.networkrail.co.uk/running-the-railway/our-routes/anglia/improving-the-railway-in-anglia/ely-area-capacity-enhancement/Active%20travel)

Early in the pandemic the County Council used a Government grant to implement the first tranche of experimental active travel schemes to increase walking and cycling. The Highways & Transport Committee on Thursday 4 November is being asked to make these permanent, including the removal of a length of parking along Station Road in Ely, and the installation of a segregated cycle lane.

Healthwatch

The Covid-19 pandemic has had a huge impact on care home residents and on their friends and families and staff, says Cambridgeshire & Peterborough Healthwatch. Their new survey records residents' experiences and challenges over the last 12-18 months, and asks what life is like now. The survey aims to capture the experiences of residents and their families. Whether it's a good or bad experience, Healthwatch says it can use feedback to improve services for everyone. Responses will be anonymised and shared with NHS and local authority care teams in our area. Hearing residents' experiences helps them learn from the challenges and prepare better for the future. <https://www.healthwatchcambridgeshire.co.uk/news/2021-10-12/tell-us-your-care-home-experiences>

Meanwhile on the Combined Authority

The Combined Authority has submitted its Bus Service Improvement Plan to the Government as required. Unfortunately, the Plan was not published before the Board agreed to submit it, giving no opportunity to the Overview & Scrutiny Committee or the public to read the document or ask questions before it was approved. The Overview & Scrutiny Committee formally met the Mayor for the first-time last month, to ask questions about transport matters including bus services, electric vehicles, and the ending of the CAM project and what this means for public transport in Cambridgeshire. Monday 22 November sees the first Mayoral Question Time—this will be a regular opportunity for the Overview & Scrutiny Committee to hold the new Mayor to account and will focus on affordable housing and the new Mayor's priorities.

8. Minutes of previous Meeting

Minutes approved as correct.

9.1 Reach Grant Fund Nothing to report.

9.2 Finance Nothing to report.

9.3 Parish Council Members

Councillor McMillan had received correspondence from Mr Hurrell regarding the Highways degradation. **Councillor McMillan** to collate information and present a response to send to Highways for the next PC meeting.

Clerk had received complaints regarding chickens in the cemetery, causing damage to flowers, plants, and graves. **Clerk** to request via email and Facebook, that residents keep their chickens within their own property.

Councillor Acklam had received an anonymous letter of complaint. The PC reiterates its policy of not responding to anonymous letters and asks that all correspondences is signed. The PC are happy to keep the names private. The PC will then respond to issues raised.

9.4 Play Spaces Nothing to report

9.5 Rights of Way Nothing to report.

9.6 24Acres Committee Nothing to report.

9.7 Neighbourhood Plan Nothing to report. It had not been possible to hold a meeting this month.

9.8 Friends Of Reach Wood Nothing to report.

9.9 A to B1102 Group

Recent activity

1. The GCP Eastern Access consultation meeting was attended by several members of the A-B1102 group on 21st Oct. The invitation was sent to PCs not to the A-B1102 group which is frustrating. The meeting was to outline their current proposals which are going into open consultation this week and ask for feedback. We once again raised the inconsistency of their approach in ignoring the area covered by the A-B1102 group. However, there is a strategic blockage as the officers on the call are unable to work beyond the remit of the GCP area. One positive of the meeting was that Claire Ruskin of Cambridge Partnership has offered to listen to our concerns and raise them with GCP Board. Lucy Frazer will be invited to this meeting too.

Actions from that meeting have been:

- Request the traffic models on which the GCP Park & Ride plans have been made
- Request the County Council Post 16 Education travel Strategy – they are supposed to publish this strategy by 31st May each year – it is not on their website – and have responsibilities for post 16 student travel which they are arguably failing to meet, and which are likely to be worsened as the Eastern Access project is undertaken unless Quy congestion is considered.
- Draft a document outlining our concerns for discussion with Claire Ruskin

2. Contact has been made with the Mayor's office and concerns have been raised here too and a meeting (no date yet) has been agreed.

3. Thanks were conveyed to Reach PC of the money agreed at the last meeting.

10. Ground/Water Source Heat Pump Feasibility Study

Councillor Acklam took over as Chair for this section.

The PC had received a letter from Reach Community Solar Farm (RCSF), who are hoping to gain a grant from the Rural Community Energy Fund with a view to undertaking a Feasibility Study to see whether it would be possible to install a Ground or water source heat pump which they envisage would be powered in part by their solar farm. The aim of the project is to reduce the energy costs of Reach residents and further reduce the village's carbon footprint. They need to show local support for the idea and requested a letter of support from the Parish Council. The PC agreed that a feasibility study was an idea to be supported. **Councillor Acklam** to draft a response.

11. **Swaffham Prior Parochial Charity representative.**
Councillor Acklam volunteered to the PC representative.

12. **Payments**

E. on - Power on the green	£19.84
CR Contracting – mowing contract	£276.50
PKF Littlejohn – Audit	£240.00
Rob Cartwright – power on the green	£500.00
Hortons Portable Buildings Ltd - 50% payment	
Cricket pavilion reissue	£12857.41

Act to Ensure your Travel Needs are Met in the Future

If you travel into Cambridge for work or leisure, your journey over the coming years will change dramatically. As I explain below, the days of using your motor car to get into central Cambridge are numbered. We are all going to be encouraged (some may say.. prised) out of our cars and onto different modes of public transport – bus, cycling, walking - if we want to access significant parts of Cambridge. This article tells you how you can ensure your voice is heard as the Greater Cambridge Partnership (GCP) and Combined Authority, the government bodies charged with leading the transformation of public transport in this area, make decisions which affect you and me.

Why is this happening?

- The population of the Greater Cambridge area is expected to grow by 28% - 33,500 new homes and 44,000 new jobs are planned*
- If everyone continued to travel as they do now, 26,000 extra daily car journeys could be added to our already congested roads*
- To ensure the region can cope with the growth and meet the reality of the Climate Emergency, the GCP have calculated that traffic needs to be reduced by 20 – 25% on 2019 levels*

*Making Connections City Access Public Consultation, Page 2

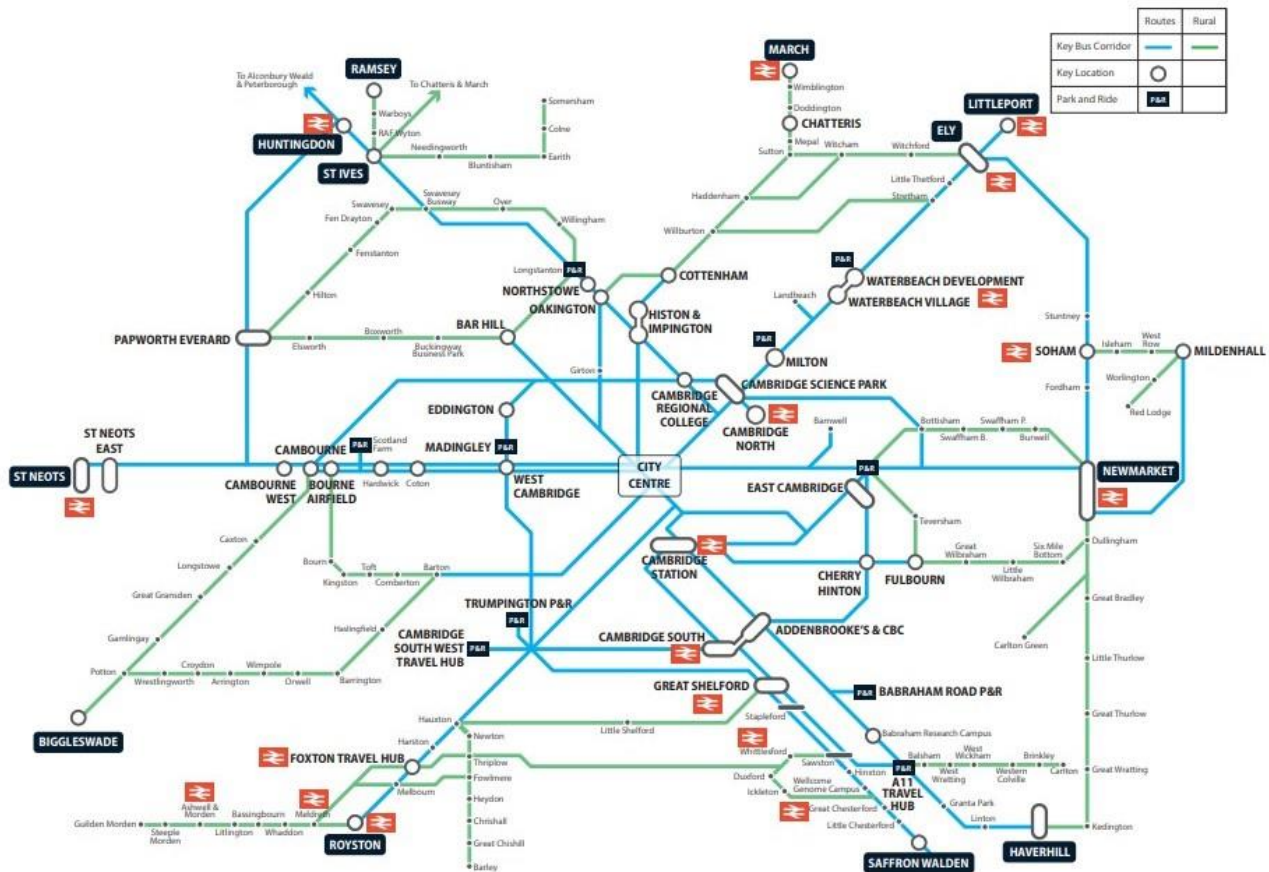
What are the Combined Authority and GCP's Aims?

The aims are to create a more joined-up public transport system to ensure that journey times are better than they would be by car, that road space is better utilised, increasing the number of “sustainable public transport vehicles” on the road network as well as creating better environments for people to cycle, walk or just spend time enjoying public spaces. To achieve this, the GCP are exploring options including:

- Increased car parking charges both at city centre car parks and at workplaces
- Charging private vehicles to drive into parts of Cambridge
- Charging vehicles to drive in particular areas unless they meet particular emissions criteria

The revenue raised from these options, if adopted, will fund a greatly enhanced bus network offering more frequent buses in all areas including rural areas, better connections, more direct services to areas of employment, faster journey times and lower fares.

GCP Proposed Bus Network



What can you do?

It is essential that as many of us contribute to the Consultation so that our views are heard. Go to www.atob1102.org and follow the link on the first page to **Current Campaigns: GCP Making Connections Consultation**. There you will find more information and links to take you to the **Making Connections Brochure and Consultation Survey**. Make sure that you comment on the proposed bus routes in our area and make clear your personal travel needs - where you travel to and from.

What does the A to B 1102 Group think?

- We welcome this consultation and the proposal to dramatically increase public transport – especially to rural communities, however
- We believe the GCP should work in closer partnership with the communities, like ours, who need to access Cambridge - to develop attractive alternative modes of transport that encourage car drivers to change their mode of transport
- It is more difficult for people who live outside Cambridge to access the City by public transport. If the city does not meet our needs, we will work and shop elsewhere to the future detriment of Cambridge!
- We are concerned that the proposed new bus routes which form the basis for this consultation are not based on current reliable data which maps the current journey patterns of commuters and leisure travellers and we are lobbying the GCP to address this point before any final decisions are made
- Whilst commuting patterns are still in a level of “flux” post the Covid Pandemic, it is vital that future bus routes operate in a way that meets the needs of commuters, in particular – otherwise, people will fail to make the shift from car to public transport
- As it becomes more difficult to get into Cambridge as routes are re-prioritised for bus, walking & cycling, motorists will find ever more inventive ways of getting around the blockages, traffic speeds will further decrease leading to more and more congestion beyond the City, for example, at intersections like Stow-cum-Quy

- We believe that fast “express” bus routes need to be created with mini park & ride sites in villages – enabling an express bus to make only one stop in each of the key villages, thus enabling fast journey times for commuters to travel hubs which offer connections to different parts of the City without all services going into central Cambridge. The proposals by GCP meet some of these ideas, which we welcome.
- In relation to the proposed changes to our current bus services along the B1102 corridor, we want to know how residents of Stow-cum-Quy will access bus services and how our communities will access the Science Park area – surely it would make more sense for an orbital bus route around Cambridge that went from Cherry Hinton to the Newmarket Road Park & Ride site (where it intersected with the service through our villages) and then on to the Science Park area, Milton and beyond?
- Finally, we would like to establish why Dullingham Station is missing from the map and more information on how these proposed services enable our College Students to access Hills Road, Long Road Sixth Form and the Regional College with greater ease than they do at present.

This is an important first step to addressing a reality none of us can continue to ignore and we hope the Mayor, the Combined Authority and the GCP will continue to expand their engagement with us, the rural communities that need to access Cambridge day by day.

Who is the A to B1102 Group?

We’ve been established to raise awareness of transport issues that will affect you, people in the villages of Burwell, the Swaffhams, Lode & Longmeadow, Bottisham and Stow-cum-Quy – to enable you to have a stronger voice and to lobby for improvements to our local transport infrastructure. We are a voluntary group and have no political affiliations or commercial interests in the decisions we are enabling consultation around. Many of our members are Parish Councillors in their own rights, so we have links to the Parish Councils of the villages we represent, our role is to complement and support their work, not in any way replace it. Learn more by visiting our website www.atob1102.org

Jonathan Cook

Chairman, A to B1102 Group

Diary Dates

December 2021	Event	Location	Time
Fridays 3, 10, 17	Reach Cafe	Village Hall	2pm to 4pm
Thursday 2	Recycling Day (Blue)		
Tuesday 7	Parish Council Meeting	Village Hall	7.45pm
Thursday 9	Recycling Day (Green)		
Thursday 16	Recycling Day (Blue)		
Wednesday 22	Recycling Day (Green)		
Friday 31	Recycling Day (Blue)		

January 2022	Event	Location	Time
Fridays 7, 14, 21, 28	Reach Cafe	Village Hall	2pm to 4pm
Tuesday 4	Parish Council Meeting	Village Hall	7.45pm
Saturday 8	Recycling Day (Green)		
Friday 14	Recycling Day (Blue)		
Thursday 20	Recycling Day (Green)		
Thursday 27	Recycling Day (Blue)		

Bus Timetable

Reach is served by the Stagecoach number 11 bus service - summary of all buses serving Reach is shown below.

Please note that there is no bus service at all on Sundays

Cambridge to Bury - Monday to Friday (excluding Bank Holidays)				
Cambridge Drummer Street	Reach	Burwell Ness Road	Newmarket Bus Station	Bury Bus Station
06:50	07:28	07:36	08:08*	08:49
07:50	08:28	08:36	09:08*	09:49
09:50	10:28	10:36	11:08*	11:49
11:50	12:28	12:36	13:08*	13:49
13:50	14:28	14:36	15:24*	15:49
15:50	16:28	16:36	17:30	17:55
18:15	18:53	19:06		
19:15	19:53	20:06		

Cambridge to Bury - Saturdays (excluding Bank Holidays)				
Cambridge Drummer Street	Reach	Burwell Ness Road	Newmarket Bus Station	Bury Bus Station
06:50	07:28	07:36	08:08*	08:49
07:50	08:28	08:36	09:08*	09:49
09:50	10:28	10:36	11:08*	11:49
11:50	12:28	12:36	13:08*	13:49
13:50	14:28	14:36	15:08*	15:49
15:50	16:28	16:36	17:08	17:55
18:15	18:53	19:01		
19:15	19:53	20:03		

Bury to Cambridge - Monday to Friday (excluding Bank Holidays)				
Bury Bus Station	Newmarket Bus Station	Burwell Ness Road	Reach	Cambridge Drummer Street
		06:19	06:33	07:12
		06:39	06:53	07:32
	08:40	09:06	09:20	09:59
10:05	10:35*	11:06	11:20	11:59
12:05	12:35*	13:06	13:20	13:59
14:05	14:35*	15:06	15:20	14:59
15:05	15:35*	16:06	16:20	15:59
16:05	16:35*	17:06	17:20	16:59
17:05	17:35*	18:06	18:20	17:59

Bury to Cambridge - Saturdays (excluding Bank Holidays)				
Bury Bus Station	Newmarket Bus Station	Burwell Ness Road	Reach	Cambridge Drummer Street
		06:19	06:33	07:12
		06:49	07:03	07:42
	08:40	09:06	09:20	09:59
10:05	10:40*	11:06	11:20	11:59
12:05	12:40*	13:06	13:20	13:59
14:05	14:40*	15:06	15:20	15:59
15:05	15:40*	16:06	16:20	16:59
16:05	16:40*	17:06	17:20	17:59
17:05	17:40*	18:06	18:20	18:59

* These are departure times - buses will arrive approximately 5 minutes earlier

A full timetable can be downloaded from www.reach-village.co.uk/bus_service.html

Then and Now (see opposite page for pictures)

Following on from the tug of war photo in the last issue we have another taken on the same evening. This time the crowd attention is focused upon the 'pole walking' event. The pole (the trunk of a conifer I believe) can be seen straddling the river just in front of the footbridge and crossing it was open to anyone who felt inclined. A popular and well attended occasion by all accounts.

Chris Patterson

Contact Information

Parish Council – see “Know Your Parish Council”		
Village Hall		
Chair	David Thomas	01638 742676
Finance	Andrew Trump	01638 743335
Bookings	Grahame Radford	01638 742814
Secretary	Sue Elliot	01638 742268
Marquee Bookings	Andrew Hall	01638 743737
Church		
Vicar	Eleanor Williams	01638 741262
Curate (Duty days Wed, Fri and Sun)	Reverend Paula Spalding	07545 868549
Priest in Retirement	Reverend David King	01638 742924
Churchwarden	Dr Stephen Martin	01638 611235
Churchwarden at Burwell/Reach	Jacqui Portman	01638 741058
Emergencies		
Electricity (Eastern Electric)		0800 783 8838
Police (Emergency/Non-Emergency)		999/101
Water (Anglian Water)		08457 145145
Doctors, Burwell		
Contact Phone Numbers		01638 741234, out of hours dial 111
Surgery Hours		Mon to Friday, 8.30am to 6.00pm
Website		https://www.theburwellsurgery.co.uk/index.aspx